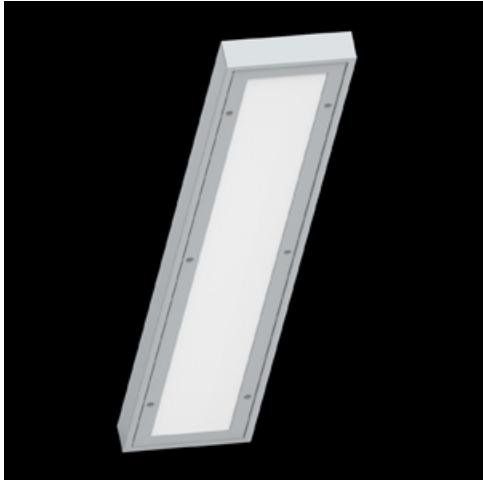


Product: RUBIN SPORT NEW LED 24000 PC-T MICRO-PRM IP44 STRONG EDD 34 830 / 1190X220

Index: 19.4207.2213.34



Description

Surface mounted luminary dedicated for sports halls, gyms and schools. The body is made of powder-coated steel sheet. The luminaire is equipped with a PC and PMMA diffuser (with a microprismatic structure) with an additional stiffening mount, which does not require a protective grid.

Product information

| | |
|----------|--|
| Category | Industrial luminaires |
| Family | RUBIN SPORT NEW LED |
| Name | RUBIN SPORT NEW LED 24000 PC-T MICRO-PRM IP44 STRONG EDD 34 830 / 1190X220 |
| Index | 19.4207.2213.34 |

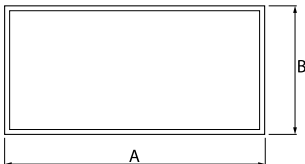


Light and electrical data

| | |
|-------------------------------------|--|
| Light source | LED |
| Luminous flux LED [lm] | 24156 |
| LED power [W] | 153 |
| Luminaire luminous flux [lm] | 16660 |
| Power of luminaire [W] | 171 |
| Luminaire's light efficiency [lm/W] | 97,4 |
| Color of the light [K] | 3000 |
| CRI | >80 |
| SDCM (LED sources) | 3 |
| Beam angle [°] | (C0-C180) / (C90-C270) - 90,2° / 99,6° |
| Protection against electric shock | I |
| Protection degree | IP44 |
| Voltage | 220..240 V, 50..60 Hz |
| Lifetime of LED sources [h] | 100000 (1) / 147000 (2) |
| Lx/By | L80/B10 (1) / L70/B50 (2) |
| Operating temperature range [°C] | 5 ÷ 30 |
| Driver | DIM DALI (EDD) |
| Power factor cos φ | >0,95 |
| Circuit load capacity | 9 (B10), 16 (B16), 9 (C10), 16 (C16) |

Mechanical data

| | |
|------------------|--|
| Assembly | surface mounted on ceiling |
| Material | steel sheet |
| Color | RAL 9016 (white) |
| Diffuser | PC-T MICRO-PRM (transparent polycarbonate and micro-prismatic diffuser PMMA) |
| Impact resistant | IK10 |
| Dimensions [mm] | 1190 x 220 x 60 |



A graph of light

