

Product: AGALINE LED 3R 14400 OPTICS-1 E 34 IP65 850 / L-1250MM

Index: 19.4200.2161.34



Description

Agaline 3R is a single linear luminaire designed for mounting on slings. The body is made of white powder-coated steel sheet. Optical system based on lenses providing different light distribution. High level of protection against penetration of dust and water - IP65. Agaline is an excellent solution for lighting industrial facilities and warehouses, but also finds application in offices, supermarkets and shops.

Product information

Category	Industrial luminaires
Family	AGALINE LED 3R
Name	AGALINE LED 3R 14400 OPTICS-1 E 34 IP65 850 / L-1250MM
Index	19.4200.2161.34

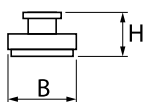
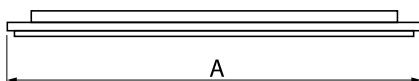


Light and electrical data

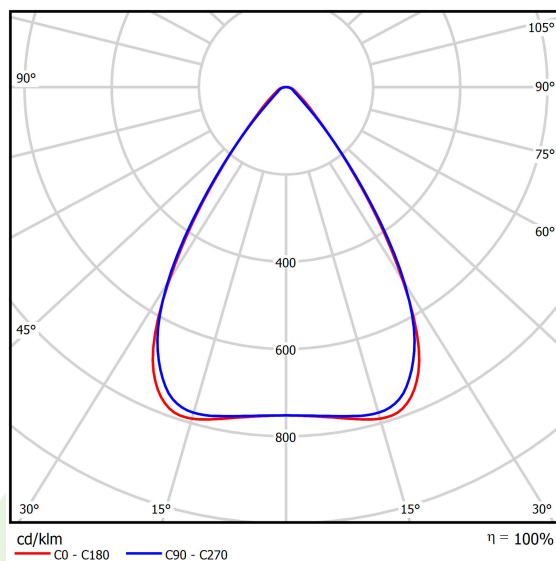
Light source	LED
Luminous flux LED [lm]	14380
LED power [W]	93
Luminaire luminous flux [lm]	14354
Power of luminaire [W]	104
Luminaire's light efficiency [lm/W]	138
Color of the light [K]	5000
CRI	>80
SDCM (LED sources)	3
Beam angle [°]	(C0-C180) / (C90-C270) - 68,2° / 69,4°
Protection against electric shock	I
Protection degree	IP65
Voltage	220..240 V, 50..60 Hz
Lifetime of LED sources [h]	>54000
Lx/By	L80B10
Operating temperature range [°C]	-25 ÷ 35
Driver	standard on/off (E)
Power factor cos φ	>0,95
Circuit load capacity	14 (B10), 22 (B16), 14 (C10), 22 (C16)

Mechanical data

Assembly	surface mounted on slings
Material	steel sheet
Color	RAL 9016 (white)
Diffuser	OPTICS (optical system based on lenses)
Impact resistant	IK04
Dimensions [mm]	1250 x 95 x 68



A graph of light



Accessories

Index 6E1-500KW34K-3

Name SUSPENSION NEW TYPE-A+B 34
LENGHT 1,5M WIRE 3X SET



Index 6E1-8670-B-1,5-3X

Name SUSPENSION NEW TYPE-F
LENGHT-1,5 METER WIRE 3X 1-
POINT



Index 6E1-8670-B-1,5

Name SUSPENSION NEW TYPE-E
LENGHT-1,5 METER WITHOUT
WIRE 1-POINT



Index 6E1-500KWB34K-3

Name SUSPENSION NEW TYPE-A+E 34
LENGHT 1,5M WIRE 3X SET



Index 6E1-9875-4-1,5-3X

Name SUSPENSION NEW TYPE-D
LENGHT-1,5 METER WIRE 3X 1-
POINT



Index 6E1-9875-3-1,5

Name SUSPENSION NEW TYPE-C
LENGHT-1,5 METER WITHOUT
WIRE 1-POINT

