

**Product:** UNIVERSAL LINE LED 16000 PLX E 24 IP20 840 / L-2288MM

**Index:** 19.4195.4321.24



## Description

Universal Line system is built on the base of aluminium profile of crosswise dimension after assembly 60 mm x 75 mm, LED strips and linear lenses. Standard colour - natural anodized aluminium. Installation: - surface mounted line (spring plates to the ceiling) - suspended line. The construction of the luminaire ensures one of the three levels of protection: IP20, IP55 or IP65. IP20 and IP65 versions of the product are dedicated for internal use. Versions IP55 of the luminaire are dedicated for external use. In order to achieve the level of protection IP55, luminaires should be installed purely and simply on a horizontal surface, illuminating part should be directed downwards. It is forbidden to install the luminaire on the wall or directed upwards.

## Product information

Category	Surface mounted luminaires
Family	UNIVERSAL LINE LED
Name	UNIVERSAL LINE LED 16000 PLX E 24 IP20 840 / L-2288MM
Index	19.4195.4321.24



## Light and electrical data

Light source	LED
Luminous flux LED [lm]	16660
LED power [W]	95
Luminaire luminous flux [lm]	12532
Power of luminaire [W]	106
Luminaire's light efficiency [lm/W]	118,2
Color of the light [K]	4000
CRI	>80
SDCM (LED sources)	3
Beam angle [°]	(C0-C180) / (C90-C270) - 109,6° / 109,6°
Protection against electric shock	I
Protection degree	IP20
Voltage	220..240 V, 50..60 Hz
Lifetime of LED sources [h]	100000 (1) / 147000 (2)
Lx/By	L80/B10 (1) / L70/B50 (2)
Operating temperature range [°C]	-25 ÷ 30
Driver	standard on/off (E)
Power factor cos φ	>0,95
Circuit load capacity	17 (B10), 20 (B16), 21 (C10), 34 (C16)

## Mechanical data



Assembly	directly mounted to ceiling construction or surface mounted on slings
Material	aluminum
Color	anodised aluminum
Diffuser	PLX (PMMA opal)
Impact resistant	IK04
Dimensions [mm]	2288 x 60 x 75

A graph of light



Accessories

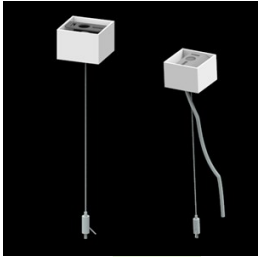
Index 01LU-UN  
Name Universal Line - ceiling clip



Index 01LU-UPZ  
Name Universal Line - clips fot slings



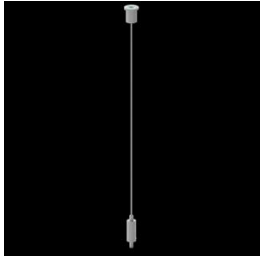
Index 6E1-500KWANK-3  
Name SUSPENSION NEW TYPE-A+B 24  
LENGHT 1,5M WIRE 3X SET



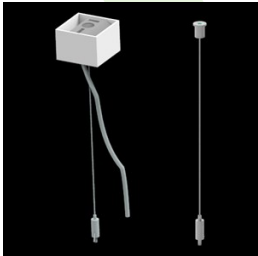
Index 6E1-8670-B-1,5-3X  
Name SUSPENSION NEW TYPE-F  
LENGHT-1,5 METER WIRE 3X 1-  
POINT



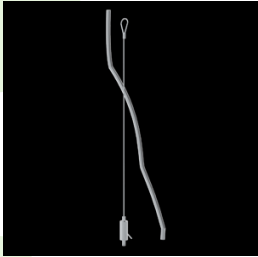
Index 6E1-8670-B-1,5  
Name SUSPENSION NEW TYPE-E  
LENGHT-1,5 METER WITHOUT  
WIRE 1-POINT



Index 6E1-500KWB24K-3  
Name SUSPENSION NEW TYPE-A+E 24  
LENGHT 1,5M WIRE 3X SET



Index 6E1-9875-4-1,5-3X  
Name SUSPENSION NEW TYPE-D  
LENGHT-1,5 METER WIRE 3X 1-  
POINT



Index 6E1-9875-3-1,5  
Name SUSPENSION NEW TYPE-C  
LENGHT-1,5 METER WITHOUT  
WIRE 1-POINT

