

Product: FASAD WALL LED 4400 SH SYM NARROW E IP65 840 / L-1180mm

Index: 19.4193.4321.83



Description

Weather proof powder painted aluminum housing. Clear stainless steel diffuser. Luminaire is equipped with adjustment allowing proper light flux operation. LED panels are applied as light sources. Recommended for walls and solid base. Fasad Wall LED is dedicated to illuminate walls of architectural objects.

Product information

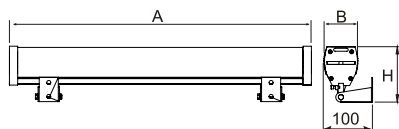
Category	Outdoor luminaires
Family	FASAD WALL LED
Name	FASAD WALL LED 4400 SH SYM NARROW E IP65 840 / L-1180mm
Index	19.4193.4321.83



Light and electrical data

Light source	LED
Luminous flux LED [lm]	4565
LED power [W]	23,4
Luminaire luminous flux [lm]	3877
Power of luminaire [W]	24,7
Luminaire's light efficiency [lm/W]	157
Color of the light [K]	4000
CRI	>80
SDCM (LED sources)	3
Beam angle [°]	(C0-C180) / (C90-C270) - 30,2° / 113,6°
Protection against electric shock	I
Protection degree	IP65
Voltage	220..240 V, 50..60 Hz
Lifetime of LED sources [h]	100000 (1) / 147000 (2)
Lx/By	L80/B10 (1) / L70/B50 (2)
Operating temperature range [°C]	-25 ÷ 30
Driver	standard on/off (E)
Power factor cos φ	>0,95
Circuit load capacity	15 (B10), 24 (B16), 24 (C10), 40 (C16)

Mechanical data



Assembly	mounted on wall
Material	aluminum
Color	gray
Diffuser	SH (transparent hardened glass)
Impact resistant	IK09
Weight [kg]	4,02
Dimensions [mm]	1180 x 62 x 114

A graph of light

