

Product: FASAD WALL LED 1100 SH SYM MEDIUM E IP65 840 / L-364mm

Index: 19.4193.2221.83



Description

Weather proof powder painted aluminum housing. Clear stainless steel diffuser. Luminaire is equipped with adjustment allowing proper light flux operation. LED panels are applied as light sources. Recommended for walls and solid base. Fasad Wall LED is dedicated to illuminate walls of architectural objects.

Product information

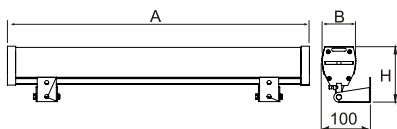
Category	Outdoor luminaires
Family	FASAD WALL LED
Name	FASAD WALL LED 1100 SH SYM MEDIUM E IP65 840 / L-364mm
Index	19.4193.2221.83



Light and electrical data

Light source	LED
Luminous flux LED [lm]	1161
LED power [W]	6
Luminaire luminous flux [lm]	1029
Power of luminaire [W]	7
Luminaire's light efficiency [lm/W]	147
Color of the light [K]	4000
CRI	>80
SDCM (LED sources)	3
Beam angle [°]	(C0-C180) / (C90-C270) - 52,4° / 94,8°
Protection against electric shock	I
Protection degree	IP65
Voltage	220..240 V, 50..60 Hz
Lifetime of LED sources [h]	100000 (1) / 147000 (2)
Lx/By	L80/B10 (1) / L70/B50 (2)
Operating temperature range [°C]	-25 ÷ 30
Driver	standard on/off (E)
Power factor cos φ	>0,95
Circuit load capacity	46 (B10), 74 (B16), 72 (C10), 115 (C16)

Mechanical data



Assembly	mounted on wall
Material	aluminum
Color	gray
Diffuser	SH (transparent hardened glass)
Impact resistant	IK09
Dimensions [mm]	364 x 62 x 114

A graph of light

