

Product: ANGLE 3700 20° EDD 21 840

Index: 19.4130.2123.21



Description

Adjustable round downlight designed for ceiling recessed installation. Luminaire body built in die-cast aluminium finished in grey or white. Product built-in an high bright especular reflector without irisation made of high purity aluminium with an angle beam of 20°, 40° or 60°. It is resistant to solids, dust, and liquids penetration – IP20/44. Luminaire sets a ball joint system which allows rotation 355° and tilting 70°. Product is optimised to be used as general and accent lighting for commercial areas shop-windows and different indoor spaces.

Product information

Category	Recessed luminaires
Family	ANGLE
Name	ANGLE 3700 20° EDD 21 840
Index	19.4130.2123.21

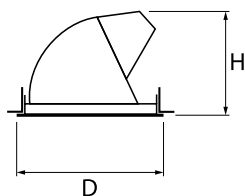


Light and electrical data

Light source	LED
Luminous flux LED [lm]	4111
LED power [W]	23,3
Luminaire luminous flux [lm]	3431
Power of luminaire [W]	26,4
Luminaire's light efficiency [lm/W]	130
Color of the light [K]	4000
CRI	82
SDCM (LED sources)	3
Beam angle [°]	(C0-C180) / (C90-C270) - 22,4° / 22,4°
Protection against electric shock	II
Protection degree	IP20/44
Voltage	220..240 V, 50..60 Hz
Lifetime of LED sources [h]	86000 (1) / 100000 (2) / 100000 (3)
Lx/By	L90/B10 (1) / L80/B10 (2) / L70/B10 (3)
Operating temperature range [°C]	5 ÷ 30
Driver	DIM DALI (EDD)
Power factor cos φ	>0,95
Circuit load capacity	50 (B10), 80 (B16), 61 (C10), 98 (C16)

Mechanical data

Assembly	mounted in suspended ceiling
Material	aluminum
Color	RAL 9006 (grey)
Diffuser	hardened transparent glass
Impact resistant	IK04
Dimensions [mm]	Ø151 x 125
Mounting hole [mm]	Ø143



A graph of light

