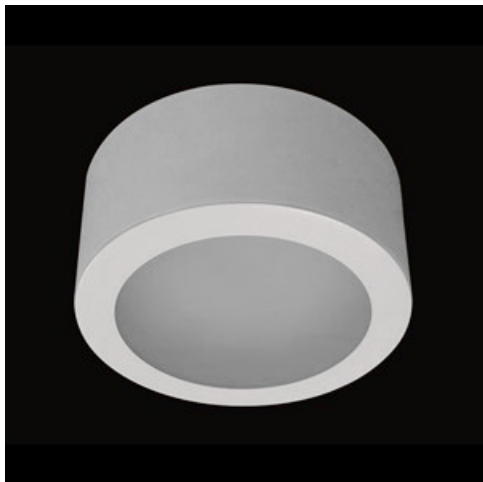


Product: BERYL LED NO 1500 PLX E 34 830**Index:** 19.4127.1111.34

Description

Surface mounted luminaire of down light type which is built from powder coated steel sheet. IP20 tightness level. Its diffuser optionally can be made from opal PMMA. BERYL LED NO/NK luminary is perfect to be used in prestige interiors such as hotels, banks, offices, boutiques, and car showrooms.

Product information

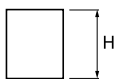
Category	Surface mounted luminaires
Family	BERYL LED NO
Name	BERYL LED NO 1500 PLX E 34 830
Index	19.4127.1111.34



Light and electrical data

Light source	LED
Luminous flux LED [lm]	1500
LED power [W]	9
Luminaire luminous flux [lm]	1175
Power of luminaire [W]	10
Luminaire's light efficiency [lm/W]	117,5
Color of the light [K]	3000
CRI	>80
SDCM (LED sources)	3
Beam angle [°]	(C0-C180) / (C90-C270) - 79,4° / 79,2°
Protection against electric shock	I
Protection degree	IP20
Voltage	220..240 V, 50..60 Hz
Lifetime of LED sources [h]	60000
Lx/By	L80/B10
Operating temperature range [°C]	5 ÷ 30
Driver	standard on/off (E)
Power factor cos φ	>0,95
Circuit load capacity	61 (B10), 98 (B16), 102 (C10), 164 (C16)

Mechanical data



Assembly	surface mounted on ceiling
Material	steel sheet
Color	RAL 9016 (white)
Diffuser	PLX (PMMA opal)
Impact resistant	IK06
Weight [kg]	1,62
Dimensions [mm]	Ø210 x 110

A graph of light

