

**Product:** X-LINE SLIM L-DOWN LED 5200 MICRO-PRM EDD 24 840 / L-2258MM S-1,5M**Index:** 19.4089.6723.24

## Description

The luminaire is made of aluminum profile. There is only lower half-space light distribution (L-DOWN). Comparing to the traditional X-Line LED, size of the luminaire has been reduced, and all construction has been closed in a narrow 48 mm profile, which gives now a more elegant form of the product. The X-Line Slim uses a PLX or Micro-PRM opal diffuser or lenses. All of this allows to manipulate light and create lighting systems, facilitating the creation of comfortable vision in the interiors and their aesthetic appearance. The X-Line Slim luminaire is designed for mounting on suspensions.

## Product information

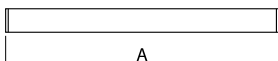
|          |  |
|----------|--|
| Category | Surface mounted luminaires   |
| Family   | X-LINE SLIM LED  |
| Name     | X-LINE SLIM L-DOWN LED 5200 MICRO-PRM EDD 24 840 / L-2258MM S-1,5M |
| Index    | 19.4089.6723.24  |



## Light and electrical data

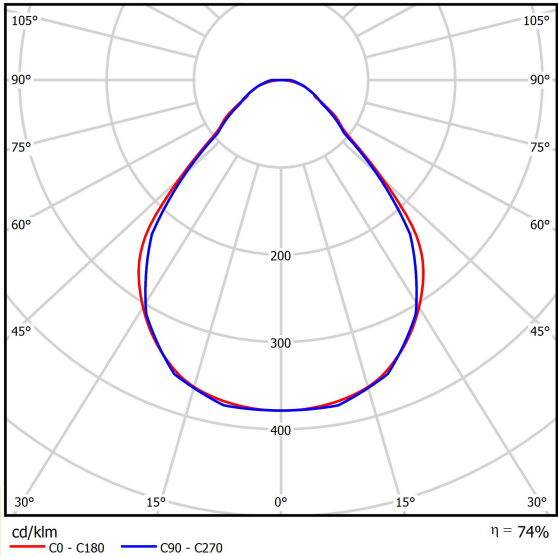
|                                     |  |
|-------------------------------------|--|
| Light source                        | LED                                    |
| Luminous flux LED [lm]              | 5234                                   |
| LED power [W]                       | 26,6                                   |
| Luminaire luminous flux [lm]        | 3890                                   |
| Power of luminaire [W]              | 28,2                                   |
| Luminaire's light efficiency [lm/W] | 137,9                                  |
| Color of the light [K]              | 4000                                   |
| CRI                                 | >80                                    |
| SDCM (LED sources)                  | 3                                      |
| Beam angle [°]                      | (C0-C180) / (C90-C270) - 88,4° / 86°   |
| Protection against electric shock   | I                                      |
| Protection degree                   | IP40                                   |
| Voltage                             | 220..240 V, 50..60 Hz                  |
| Lifetime of LED sources [h]         | 100000 (1) / 147000 (2)                |
| Lx/By                               | L80/B10 (1) / L70/B10 (2)              |
| Operating temperature range [°C]    | 5 ÷ 30                                 |
| Driver                              | DIM DALI (EDD)                         |
| Power factor cos φ                  | >0,95                                  |
| Circuit load capacity               | 17 (B10), 28 (B16), 26 (C10), 41 (C16) |

## Mechanical data



|                  |   |
|------------------|---|
| Assembly         | surface mounted on slings                 |
| Material         | aluminum                                  |
| Color            | anodised aluminum                         |
| Diffuser         | Micro-PRM (micro-prismatic diffuser PMMA) |
| Impact resistant | IK04                                      |
| Dimensions [mm]  | 2258 x 48 x 70                            |

A graph of light



Accessories

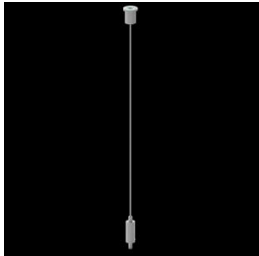
Index 6E1-500KWANK-5  
Name SUSPENSION NEW TYPE-A+B 24  
LENGHT 1,5M WIRE 5X SET



Index 6E1-8670-B-1,5-5X  
Name SUSPENSION NEW TYPE-F  
LENGHT-1,5 METER WIRE 5X 1-  
POINT



Index 6E1-8670-B-1,5  
Name SUSPENSION NEW TYPE-E  
LENGHT-1,5 METER WITHOUT  
WIRE 1-POINT



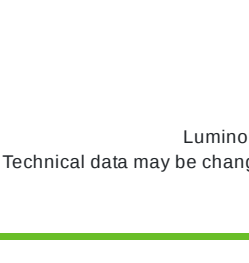
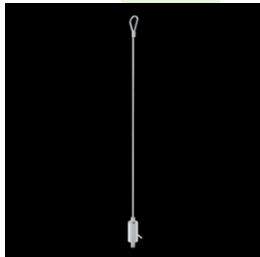
Index 6E1-500KWB24K-5  
Name SUSPENSION NEW TYPE-A+E 24  
LENGHT 1,5M WIRE 5X SET



Index 6E1-9875-4-1,5-5X  
Name SUSPENSION NEW TYPE-D  
LENGHT-1,5 METER WIRE 5X 1-  
POINT



Index 6E1-9875-3-1,5  
Name SUSPENSION NEW TYPE-C  
LENGHT-1,5 METER WITHOUT  
WIRE 1-POINT



Luminous flux tolerance +/- 10%. Power tolerance +/- 10%.  
Technical data may be changed. Photos of the luminaires may differ from reality.  
Date of last update: 24-01-2023