

Product: BERYL SURFACE NEW LED O-3 2800 PLX E IP44 34 830**Index:** 19.4043.9411.34

Description

Downlight surface mounted luminaire made of cast aluminum. Luminaire is dedicated for prestigious interiors such as hotels, banks and offices of higher standard. Owing to the newest components and renowned producers of LEDs applied it was possible to build such luminaires which save energy consumption comparing with traditional solutions.

Product information

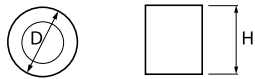
Category	Surface mounted luminaires
Family	BERYL SURFACE NEW LED O IP44
Name	BERYL SURFACE NEW LED O-3 2800 PLX E IP44 34 830
Index	19.4043.9411.34



Light and electrical data

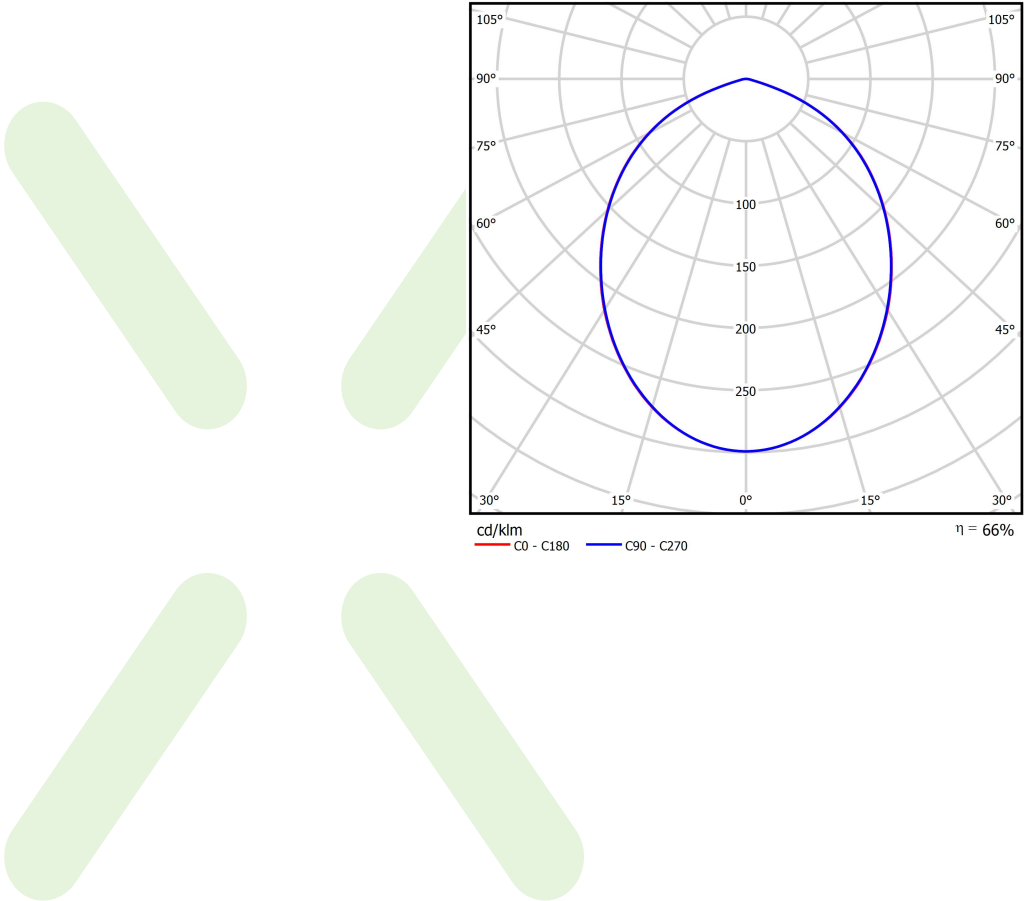
Light source	LED
Luminous flux LED [lm]	3019
LED power [W]	16,2
Luminaire luminous flux [lm]	1983
Power of luminaire [W]	18,4
Luminaire's light efficiency [lm/W]	107,8
Color of the light [K]	3000
CRI	80
SDCM (LED sources)	2
Beam angle [°]	(C0-C180) / (C90-C270) - 94,6° / 94,4°
Photobiological risk class (IEC/EN 62471)	RG0
Protection against electric shock	I
Protection degree	IP44
Voltage	220..240 V, 50..60 Hz
Lifetime of LED sources [h]	91000 (1) / 100000 (2) / 100000 (3)
Lx/By	L90/B10 (1) / L80/B10 (2) / L70/B10 (3)
Operating temperature range [°C]	5 ÷ 30
Driver	standard on/off (E)
Power factor cos φ	>0,95
Circuit load capacity	29 (B10), 47 (B16), 49 (C10), 79 (C16)

Mechanical data



Assembly	surface mounted on ceiling
Material	aluminum
Color	RAL 9016 (white)
Diffuser	PLX (PMMA opal)
Impact resistant	IK04
Weight [kg]	3,18
Dimensions [mm]	Ø215 x 182

A graph of light



Luminous flux tolerance +/- 10%. Power tolerance +/- 10%.
Technical data may be changed. Photos of the luminaires may differ from reality.
Date of last update: 24-01-2023