

Product: BERYL NEW LED K-2/L2 3600 E 33 IP20/44 830

Index: 19.4032.1211.33



Description

Aluminum cast housing. This technology significantly increases possibility of application of particular luminaire due to lower ceiling load since additional cooling radiator is not required. Beryl New LED K has higher efficiency and efficiency than the previous version. Luminaire is dedicated for prestigious interiors such as hotels, banks and offices of higher standard. Owing to the newest components and renowned producers of LEDs applied it was possible to build such luminaires which save energy consumption comparing with traditional solutions. The luminaire has the ability to adjust the optics in two planes (in the vertical axis by 359° and to the left and right 15°). Note: the color of the frame and housing has a slightly different shade than the color of the inner reflector cover.

Product information

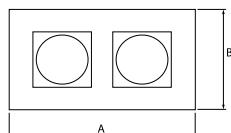
Category	Recessed luminaires
Family	BERYL NEW LED K/L2
Name	BERYL NEW LED K-2/L2 3600 E 33 IP20/44 830
Index	19.4032.1211.33



Light and electrical data

Light source	LED
Luminous flux LED [lm]	8358
LED power [W]	45
Luminaire luminous flux [lm]	6039
Power of luminaire [W]	51
Luminaire's light efficiency [lm/W]	118,4
Color of the light [K]	3000
CRI	80
SDCM (LED sources)	2
Beam angle [°]	(C0-C180) / (C90-C270) - 39° / 39,2°
Protection against electric shock	I
Protection degree	IP20/44
Voltage	220..240 V, 50..60 Hz
Lifetime of LED sources [h]	86000 (1) / 100000 (2) / 100000 (3)
Lx/By	L90/B10 (1) / L80/B10 (2) / L70/B10 (3)
Operating temperature range [°C]	5 ÷ 30
Driver	standard on/off (E)
Power factor cos φ	>0,95
Circuit load capacity	19 (B10), 31 (B16), 32 (C10), 52 (C16)

Mechanical data



Assembly	mounted in module ceilings, as well as plasterboard ceilings
Material	aluminum
Color	RAL 9010 (white)
Diffuser	transparent glass
Impact resistant	IK04
Dimensions [mm]	326 x 164 x 137
Mounting hole [mm]	310 x 152

A graph of light

