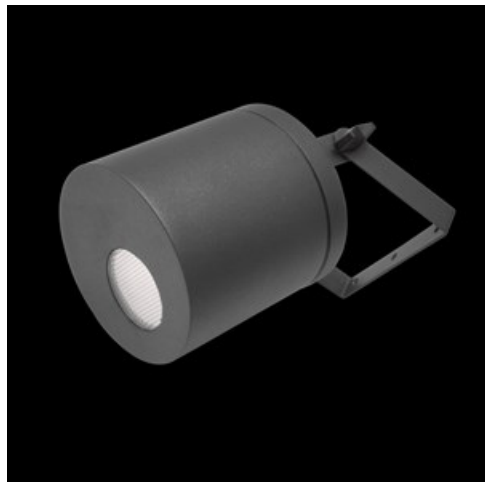


Product: ROLLER LED 1800 FLOOD E IP65 21 840

Index: 19.3172.0006.21



Description

Body of the fitting is made of an aluminum profile and installed on a wall or a ceiling. Assembly on a ceiling is performed using a grip to adjust the fitting in any direction. The fitting is made for locations where it is necessary to provide instantaneous directional lighting, which involves high frequency of switching on the appliance. This type of fitting is particularly recommended for building entrances, garage entries etc.

Product information

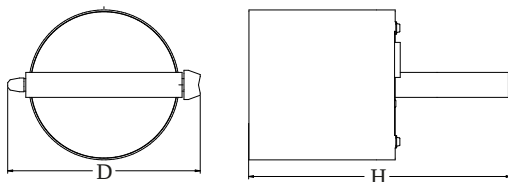
Category	Outdoor luminaires
Family	ROLLER LED
Name	ROLLER LED 1800 FLOOD E IP65 21 840
Index	19.3172.0006.21



Light and electrical data

Light source	LED
Luminous flux LED [lm]	2058
LED power [W]	11,3
Luminaire luminous flux [lm]	1565
Power of luminaire [W]	12,8
Luminaire's light efficiency [lm/W]	122,3
Color of the light [K]	4000
CRI	85
SDCM (LED sources)	2
Beam angle [°]	(C0-C180) / (C90-C270) - 95° / 92,8°
Protection against electric shock	I
Protection degree	IP65
Voltage	220..240 V, 50..60 Hz
Lifetime of LED sources [h]	83000 (1) / 100000 (2) / 100000 (3)
Lx/By	L90/B10 (1) / L80/B10 (2) / L70/B10 (3)
Operating temperature range [°C]	-25 ÷ 30
Driver	standard on/off (E)
Power factor cos φ	>0,9
Circuit load capacity	61 (B10), 98 (B16), 102 (C10), 164 (C16)

Mechanical data



Assembly	surface mounted on ceiling or on wall
Material	aluminum
Color	RAL 9006 (grey)
Diffuser	opalescent polycarbonate
Impact resistant	IK02
Dimensions [mm]	Ø145 x 260

A graph of light

