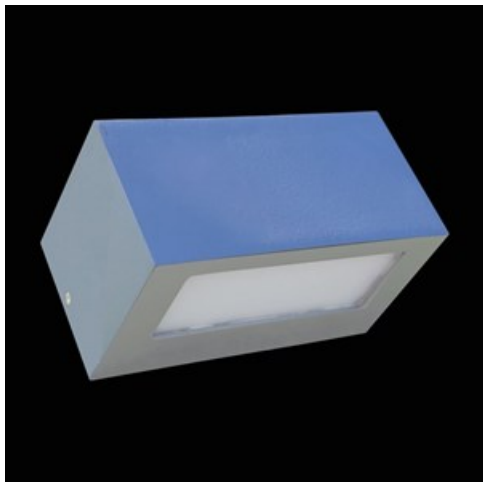


Product: KUBIK WALL ECO LED UP&DOWN 2X G9 IP54 25**Index:** 19.3165.0004.25

Description

Luminaire for removable LED sources, called Retrofit, matching the G9 holder. The body is made of aluminum painted with a special facade paint resistant to weather conditions. PMMA opal. Very easy assembly and access to the interior. Recommended for balconies lighting.

Product information

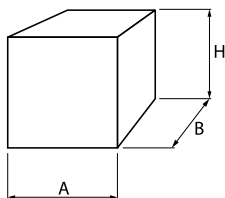
| | |
|----------|--|
| Category | Outdoor luminaires |
| Family | KUBIK WALL ECO LED IP54 |
| Name | KUBIK WALL ECO LED UP&DOWN 2X G9 IP54 25 |
| Index | 19.3165.0004.25 |



Light and electrical data

| | |
|-------------------------------------|--|
| Light source | RETROFIT G9 (not included) |
| Luminous flux LED [lm] | depending on applied light source |
| LED power [W] | depending on applied light source |
| Luminaire luminous flux [lm] | depending on applied light source |
| Power of luminaire [W] | depending on applied light source |
| Luminaire's light efficiency [lm/W] | depending on applied light source |
| Color of the light [K] | depending on applied light source |
| CRI | depending on applied light source |
| SDCM (LED sources) | depending on applied light source |
| Beam angle [°] | (C0-C180) / (C90-C270) - 109° / 107,2° |
| Protection against electric shock | I |
| Protection degree | IP54 |
| Voltage | 220..240 V, 50..60 Hz |
| Lifetime of LED sources [h] | depending on applied light source |
| Lx/By | depending on applied light source |
| Driver | none |

Mechanical data



| | |
|-----------------|---|
| Assembly | mounted on wall |
| Material | aluminum |
| Color | RAL 7016 (anthracite, metallic, fine structure) |
| Diffuser | PMMA opal |
| Weight [kg] | 1,1 |
| Dimensions [mm] | 200 x 100 x 110 |

A graph of light

