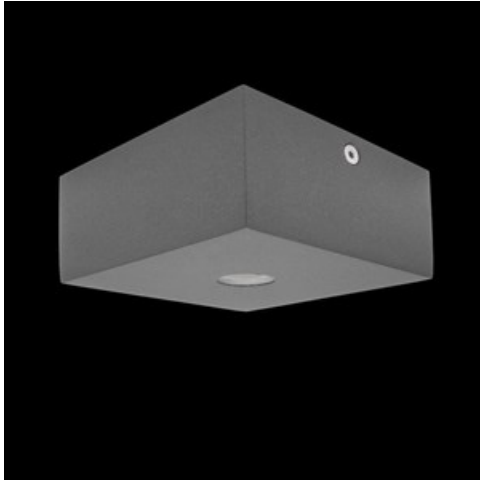


Product: KUBIK CEILING SLIM LED 1X2,4W 24°/4000K E IP65 21

Index: 19.3151.0002.21



Description

An outdoor fitting designed for ceiling mounting. The body is made of aluminum. Energy-efficient fitting made of component parts produced by renowned companies. Ergonomic shapes of the fitting enable the application of the Kubik-type fitting almost in every building. The assembly is very easy. Level of protection against penetration of dust and water - IP65. Kubik Ceiling Slim LED luminaire relative to the standard version has a smaller height. Kubik Ceiling Slim LED is more slim, and thus stands out from the ceiling for only 5 cm.

Product information

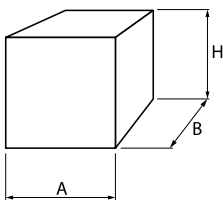
Category	Outdoor luminaires
Family	KUBIK CEILING SLIM LED
Name	KUBIK CEILING SLIM LED 1X2,4W 24°/4000K E IP65 21
Index	19.3151.0002.21



Light and electrical data

Light source	LED
Luminous flux LED [lm]	187
LED power [W]	2
Luminaire luminous flux [lm]	178
Power of luminaire [W]	4
Luminaire's light efficiency [lm/W]	44,5
Color of the light [K]	4000
CRI	>80
SDCM (LED sources)	5
Beam angle [°]	(C0-C180) / (C90-C270) - 36° / 36°
Protection against electric shock	I
Protection degree	IP65
Voltage	220..240 V, 50..60 Hz
Lifetime of LED sources [h]	50000
Lx/By	L70/B50
Operating temperature range [°C]	-25 ÷ 30
Driver	standard on/off (E)
Power factor cos φ	>0,5
Circuit load capacity	80 (B10), 157 (B16), 265 (C10), 317 (C16)

Mechanical data



Assembly	surface mounted on ceiling
Material	aluminum
Color	RAL 9006 (gray, metallic, fine structure)
Diffuser	transparent polycarbonate
Impact resistant	IK09
Dimensions [mm]	100 x 100 x 50

A graph of light

