

**Product:** ATENA LINE NEW OUTDOOR LED 36000 SH ASY E IP65 04 840 / UCHWYT OBROTOWY

**Index:** 19.3138.0036.04



## Description

Outdoor luminaire dedicated for pole mounting, ceiling mounting or for hanging mounting. The external application is possible due to the fact that the product is equipped with a pressure compensation valve, and the housing has a special painting adapted to the external conditions. Rectangular housing made of aluminum sheet. Only one colour available: RAL 9005 (black). Upon client request there is a possibility to make longer luminaire than standard dimensions. Consequently, the luminaire will have bigger luminous flux. The light sources are protected by diffuser made of hardened glass and the whole construction is characterized by high level of protection against dust and water penetration-IP65.

## Product information

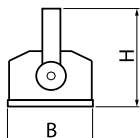
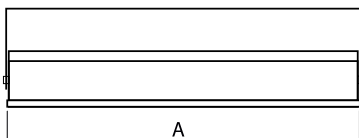
Category	<b>Outdoor luminaires</b>
Family	<b>ATENA LINE NEW OUTDOOR LED</b>
Name	<b>ATENA LINE NEW OUTDOOR LED 36000 SH ASY E IP65 04 840 / UCHWYT OBROTOWY</b>
Index	<b>19.3138.0036.04</b>



## Light and electrical data

Light source	<b>LED</b>
Luminous flux LED [lm]	<b>37271</b>
LED power [W]	<b>208</b>
Luminaire luminous flux [lm]	<b>27446</b>
Power of luminaire [W]	<b>210</b>
Luminaire's light efficiency [lm/W]	<b>130,7</b>
Color of the light [K]	<b>4000</b>
CRI	<b>&gt;80</b>
SDCM (LED sources)	<b>3</b>
Beam angle [°]	<b>asymmetric light distribution - Imax=-54°</b>
Protection against electric shock	<b>I</b>
Protection degree	<b>IP65</b>
Voltage	<b>220..240 V, 50..60 Hz</b>
Lifetime of LED sources [h]	<b>83000</b>
Lx/By	<b>L90/B10</b>
Operating temperature range [°C]	<b>-25 ÷ 40</b>
Driver	<b>standard on/off (E)</b>
Power factor cos φ	<b>&gt;0,95</b>
Circuit load capacity	<b>7 (B10), 11 (B16), 7 (C10), 11 (C16)</b>

## Mechanical data



Assembly	<b>mounted on poles; directly mounted to ceiling construction or surface mounted on slings</b>
Material	<b>aluminum</b>
Color	<b>RAL 9005 (black)</b>
Diffuser	<b>SH (transparent hardened glass)</b>
Impact resistant	<b>IK08</b>
Weight [kg]	<b>5,7</b>
Dimensions [mm]	<b>680 x 201 x 190</b>

## A graph of light

