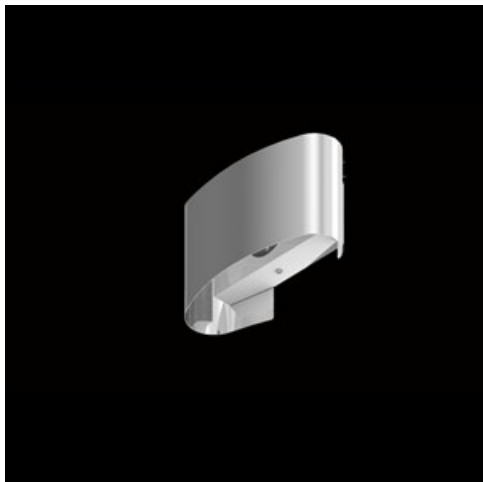


Product: LUXWALL DECO LED 1X G9 ODB-34**Index:** 19.3021.0001.34

Description

Architectural luminaire, wall mounted for decorative or accent lighting of representative interiors, halls or corridors. Eagerly used in such facilities as hotels, palaces, villas or art galleries. The body is made of steel painted white (RAL 9016). Other colors available upon special request. Luminaire reflector made of polished stainless steel (possibility of painting in white). The product is available in two variants due to the light source. It can be equipped with LED sources and an electronic driver or have a G9 base for interchangeable sources of general use that do not require a dedicated driver. In-direct luminaire.

Product information

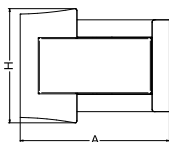
Category	Architectural luminaires
Family	LUXWALL DECO LED
Name	LUXWALL DECO LED 1X G9 ODB-34
Index	19.3021.0001.34



Light and electrical data

Light source	RETROFIT G9 (not included)
Luminous flux LED [lm]	depending on applied light source
LED power [W]	depending on applied light source
Luminaire luminous flux [lm]	depending on applied light source
Power of luminaire [W]	depending on applied light source
Luminaire's light efficiency [lm/W]	depending on applied light source
Color of the light [K]	depending on applied light source
CRI	depending on applied light source
SDCM (LED sources)	depending on applied light source
Beam angle [°]	asymmetric light distribution
Protection against electric shock	I
Protection degree	IP20
Voltage	220..240 V, 50..60 Hz
Lifetime of LED sources [h]	depending on applied light source
Lx/By	depending on applied light source
Driver	none

Mechanical data



Assembly	mounted on wall
Material	steel sheet
Color	RAL 9016 (white)
Diffuser	none
Impact resistant	IK02
Dimensions [mm]	260 x 103 x 220

A graph of light

