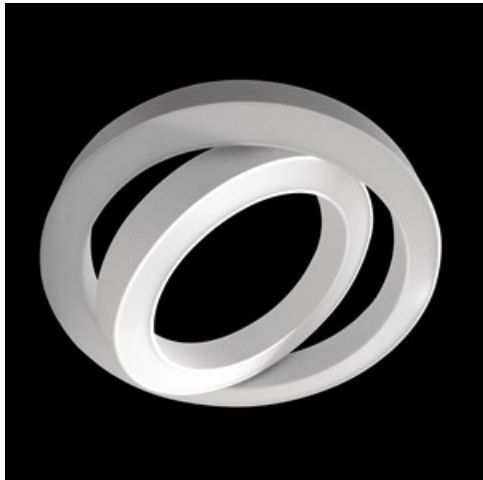


Product: DOUBLE SPHERE LED 25000 E PLX 34 830 / S-1,5M

Index: 19.3016.0001.34



Description

Round suspended luminaire equipped with highly efficient LED sources, designed for interiors with high stylistic requirements. The product consists of two glowing rings that can be adjusted relative to each other. Thanks to this, we obtain a very interesting effect. Dedicated application: representative room facilities such as halls, atria, receptions in shopping malls, museums, offices and many other public facilities.

Product information

Category	Architectural luminaires
Family	DOUBLE SPHERE LED
Name	DOUBLE SPHERE LED 25000 E PLX 34 830 / S-1,5M
Index	19.3016.0001.34



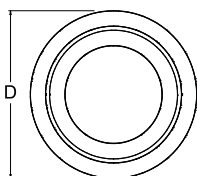
Light and electrical data

Light source	LED
Luminous flux LED [lm]	25168
LED power [W]	190
Luminaire luminous flux [lm]	13198
Power of luminaire [W]	213
Luminaire's light efficiency [lm/W]	62
Color of the light [K]	3000
CRI	>80
SDCM (LED sources)	3
Beam angle [°]	(C0-C180) / (C90-C270) - 113,4° / 111,8°
Protection against electric shock	I
Protection degree	IP20
Voltage	220..240 V, 50..60 Hz
Lifetime of LED sources [h]	60000
Lx/By	L80/B10
Operating temperature range [°C]	5 ÷ 30
Driver	standard on/off (E)
Power factor cos φ	>0,95
Circuit load capacity	2 (B10), 2 (B16), 3 (C10), 5 (C16)

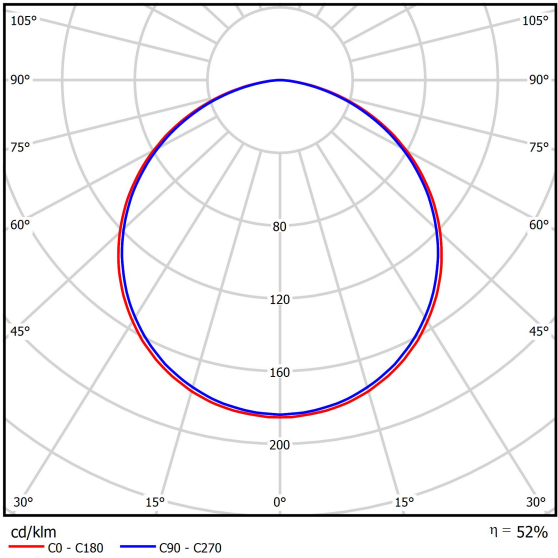
Mechanical data

Assembly	surface mounted on slings
Material	aluminum
Color	RAL 9016 (white)
Diffuser	PLX (PMMA opal)
Impact resistant	IK03
Weight [kg]	6,8
Dimensions [mm]	887 x 100

H [mm]



A graph of light



Accessories

Index 6E5-000OKW1PH-3
Name SUSPENSION NEW TYPE-M 34
LENGHT 5,0M WIRE 3X 1-POINT



Index 6E1-8670B-B-5
Name SUSPENSION NEW TYPE-N
LENGHT-5,0 METER WITHOUT
WIRE 1-POINT

