

Product: BERYL KN LED UP&DOWN 2x2,4W LED 5°-21°/6500K IP40 21**Index:** 19.3013.2004.21

Description

Luminaire adapted to be mounted on walls. High lighting efficiency LEDs were used as light sources. Optical system consists of professional lens that provide light distribution of 5-21° angle. Owing to the optical system solutions, the product is highly effective. Its body is made from anodized aluminum profile. It is resistant to solids, dust, and liquids penetration – IP40 or IP65. This type of luminaire is recommended for decorative or accent illumination, e.g. in restaurants, pubs, or cafes.

Product information

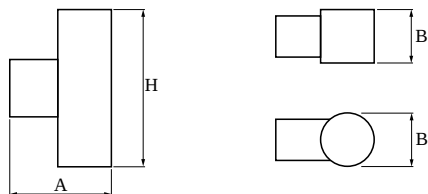
| | |
|----------|--|
| Category | Architectural luminaires |
| Family | BERYL KN LED UP&DOWN |
| Name | BERYL KN LED UP&DOWN 2x2,4W LED 5°-21°/6500K IP40 21 |
| Index | 19.3013.2004.21 |



Light and electrical data

| | |
|-------------------------------------|---|
| Light source | LED |
| Luminous flux LED [lm] | 426 |
| LED power [W] | 5 |
| Luminaire luminous flux [lm] | 343 |
| Power of luminaire [W] | 7 |
| Luminaire's light efficiency [lm/W] | 49 |
| Color of the light [K] | 6500 |
| CRI | >80 |
| SDCM (LED sources) | 5 |
| Beam angle [°] | (C0-C180) / (C90-C270) - 36° / 9,6° |
| Protection against electric shock | I |
| Protection degree | IP40 |
| Voltage | 220..240 V, 50..60 Hz |
| Lifetime of LED sources [h] | 50000 |
| Lx/By | L70/B50 |
| Operating temperature range [°C] | 5 ÷ 30 |
| Driver | standard on/off (E) |
| Circuit load capacity | 80 (B10), 157 (B16), 265 (C10), 317 (C16) |

Mechanical data



| | |
|------------------|---|
| Assembly | mounted on wall |
| Material | aluminum |
| Color | RAL 9006 (gray, metallic, fine structure) |
| Diffuser | transparent polycarbonate |
| Impact resistant | IK04 |
| Dimensions [mm] | 75 x 50 x 148 |

A graph of light

