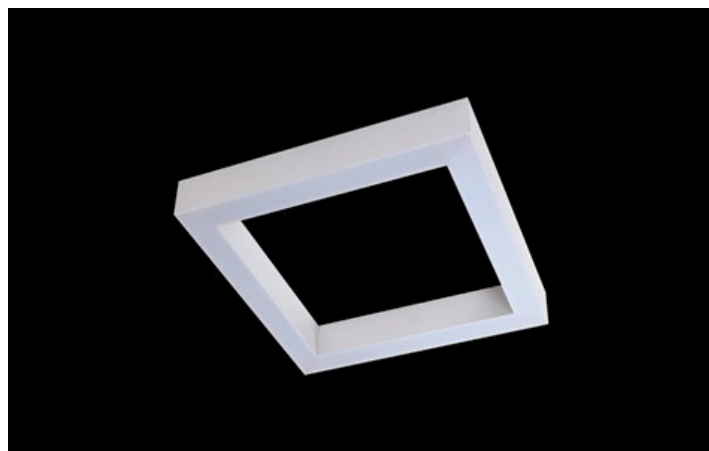
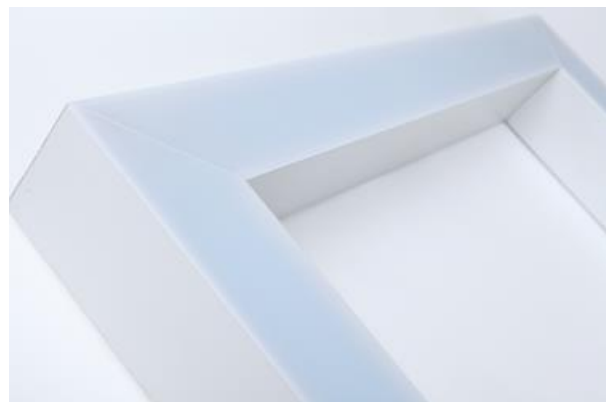




## X-LINE SQ SURFACE LED

Surface mounted luminaires



Luminary made from aluminum profile adapted to be mounted on suspensions, or directly on a solid ceiling construction. LED sources of the high illumination efficacy, and the color temperature of 3000 K or 4000 K, make the light source. Diode illumination stream is 5200 lm or 8800 lm. PMMA opal or micro prism diffuser available. Luminary to be used in offices, conference halls, all structures of public sectors.



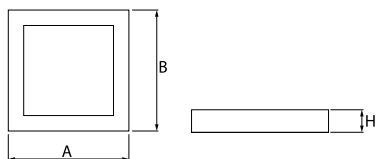
"Jardin Bemowo" residential, Warsaw



## Main parameters:

Name	Luminous flux LED [lm]	Power of luminaire [W]	Color [K]	Dimensions A x B x H [mm]
X-LINE SQ SURFACE LED 5200	5051 / 5234	28,2	3000 / 4000	642 x 642 x 72
X-LINE SQ SURFACE LED 8800	8811 / 9130	49,1	3000 / 4000	642 x 642 x 72

## Technical drawing:



## Light and electrical features:

<b>Light source</b>	LED
<b>Voltage</b>	220..240 V, 50..60 Hz
<b>Lifetime of LED sources [h]</b>	100000 (1) / 147000 (2)
<b>Lx/By</b>	L80/B10 (1) / L70/B50 (2)
<b>CRI</b>	>80
<b>SDCM (LED sources)</b>	3
<b>Operating temperature range [°C]</b>	5 ÷ 30
<b>Driver</b>	standard on/off (E) DIM DALI (EDD) *
<b>Power factor cos φ</b>	>0,95

\* Variant to specify when ordering

## Mechanical features:

<b>Assembly</b>	directly mounted to ceiling construction or surface mounted on slings
<b>Material</b>	aluminum
<b>Color</b>	anodised aluminum
<b>Diffuser</b>	Micro-PRM (micro-prismatic diffuser PMMA) PLX (PMMA opal)

## Additional information:

The luminaire can be made in CLO version.

Note: The power shown refers to the whole system (tolerance +/- 10%).  
The given luminous flux refers to LED light sources (tolerance +/- 10% depends on the value of the colour temperature).  
Technical data may be changed. Photos of the luminaires may differ from reality.  
Date of last update: 24-01-2023