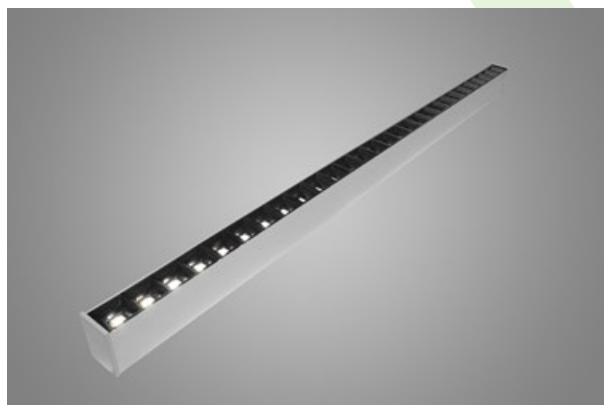




## X-LINE SLIM LOW UGR UP&DOWN LED

### Surface mounted luminaires



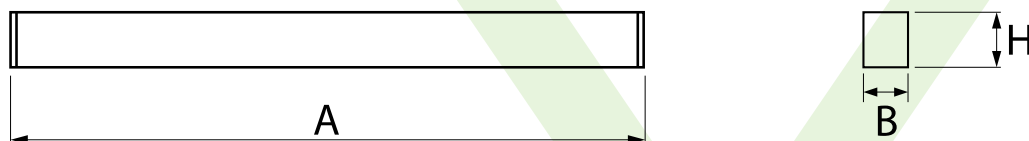
The luminaire is made of aluminum profile. Its characteristic feature is the light distribution in the upper and lower half-space. Comparing to the traditional X-Line LED, size of the luminaire has been reduced, and all construction has been closed in a narrow 48 mm profile, which gives now a more elegant form of the product. The X-Line Slim uses a PC diffuser and anti-glare louvre (intended only for the lower beam). All of this allows to manipulate light and create lighting systems, facilitating the creation of comfortable vision in the interiors and their aesthetic appearance. The X-Line Slim luminaire is designed for mounting on suspensions. LED sources distributing light in both the lower and upper half-space are connected into one circuit and use a common, single power supply.



## Main parameters:

Name	Luminous flux LED [lm]	Power of luminaire [W]	Color [K]	Dimensions A x B x H [mm]
X-LINE SLIM LOW UGR UP&DOWN LED 2200/4200	6824,9	37,3	4000	1144 x 48 x 70
X-LINE SLIM LOW UGR UP&DOWN LED 2750/5250	8462,5	46,8	4000	1424 x 48 x 70 / 1412 x 48 x 70
X-LINE SLIM LOW UGR UP&DOWN LED 4400/8400	13649,8	74,5	4000	2270 x 48 x 70 / 2266 x 48 x 70

## Technical drawing:



## Light and electrical features:

Light source	LED
Voltage	220..240 V, 50..60 Hz
Lifetime of LED sources [h]	100000 (1) / 147000 (2)
Lx/By	L80/B10 (1) / L70/B10 (2)
CRI	>80
SDCM (LED sources)	3
Operating temperature range [°C]	5 ÷ 30
Driver	standard on/off (E) DIM DALI (EDD) *
Power factor cos φ	>0,95

\* Variant to specify when ordering

## Mechanical features:

Assembly	surface mounted on slings
Material	aluminum
Color	RAL 9005 (black) anodised aluminum RAL 9016 (white) *
Diffuser	PC/RASTER (opalescent polycarbonate/anti-glare louvre) [up/down]

## Additional information:

The luminaire can be made in CLO version.

Note: The power shown refers to the whole system (tolerance +/- 10%).  
The given luminous flux refers to LED light sources (tolerance +/- 10% depends on the value of the colour temperature).  
Technical data may be changed. Photos of the luminaires may differ from reality.  
Date of last update: 24-01-2023