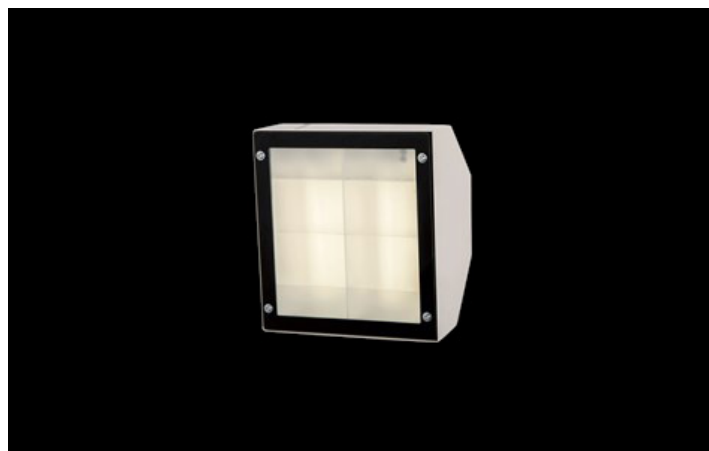




## UPDOOR LED

### Outdoor luminaires



Powder painted steel housing. Possibility of mounting emergency module. Isolated battery applied in luminaire is equipped with thermostat enabling performance in low temperature up to  $-20^{\circ}\text{C}$ . UPDOOR might be mounted on walls or ceilings and is recommended to illuminate buildings' entrances, arteries, tunnels, underground entrances, etc.



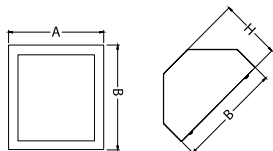
Auto Idea - Mercedes showroom, Białystok



## Main parameters:

Name	Luminous flux LED [lm]	Power of luminaire [W]	Color [K]	Dimensions A x B x H [mm]
UPDOOR 1500	1485	10	4000	242 x 266 x 154

## Technical drawing:



## Light and electrical features:

Light source	LED
Voltage	220..240 V, 50..60 Hz
Lifetime of LED sources [h]	60000
Lx/By	L70/B50
CRI	>80
SDCM (LED sources)	3
Operating temperature range [°C]	-20 ÷ 30
Driver	standard on/off (E)
Power factor cos φ	>0,95

## Mechanical features:

Assembly	mounted on wall
Material	steel sheet
Color	RAL 9016 (white)
Diffuser	SHM (hardened mat glass)

Note: The power shown refers to the whole system (tolerance +/- 10%).  
The given luminous flux refers to LED light sources (tolerance +/- 10% depends on the value of the colour temperature).  
Technical data may be changed. Photos of the luminaires may differ from reality.  
Date of last update: 24-01-2023