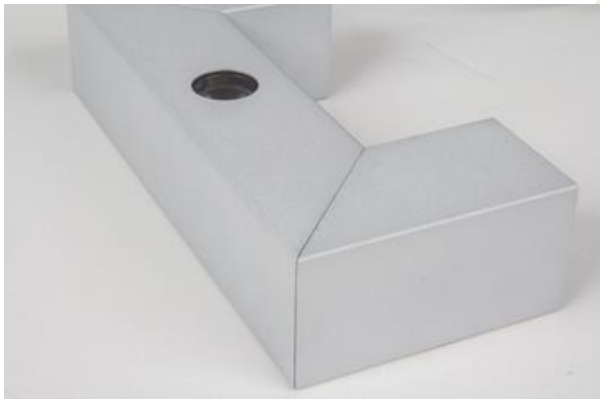
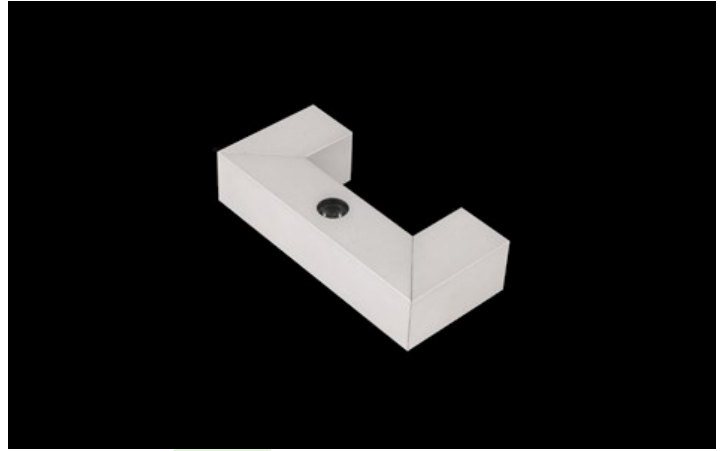


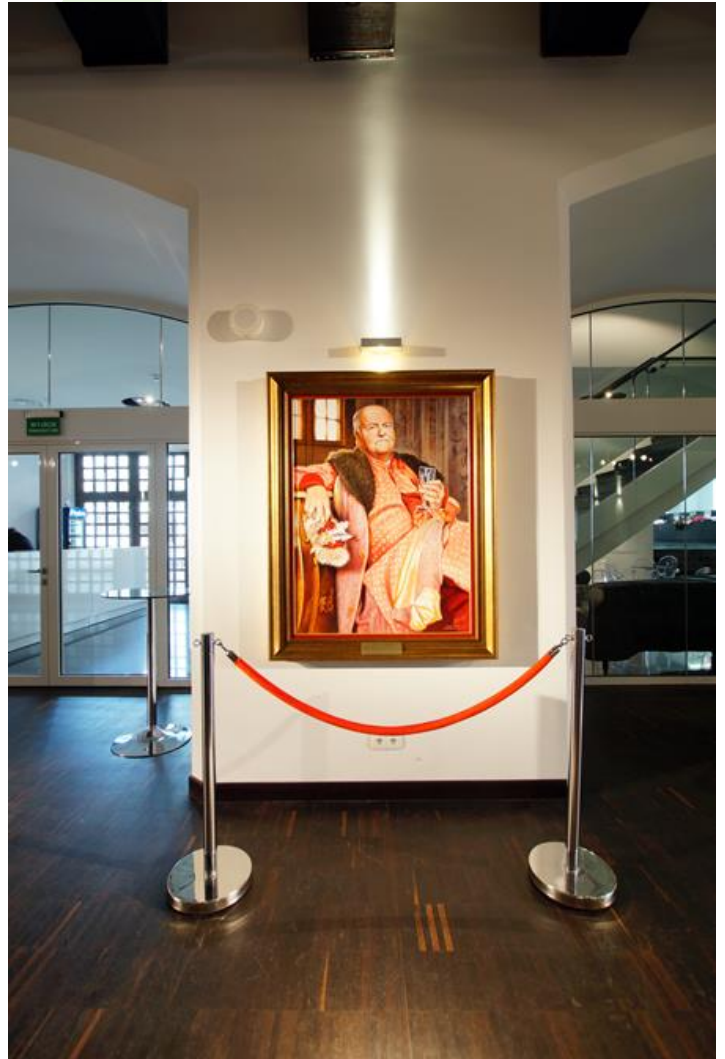


MINI WALL C LED

Architectural luminaires



Aluminum made luminaire. Thanks to applied lenses of renowned producers there is possibility to arrange luminous flux UP/DOWN. MINI WALL C LED UP&DOWN is recommended to be installed as a decorative and accent lighting.



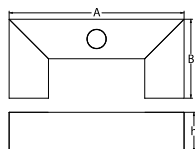
Opera on the Castle, Szczecin



Main parameters:

Name	Luminous flux LED [lm]	Power of luminaire [W]	Color [K]	Dimensions A x B x H [mm]
MINI WALL C LED UP&DOWN 2X1,7W	248 / 304	5	3000 / 4000	200 x 90 x 45

Technical drawing:



Light and electrical features:

Light source	LED
Voltage	220..240 V, 50..60 Hz
Lifetime of LED sources [h]	50000
Lx/By	L70/B50
CRI	>80
SDCM (LED sources)	5
Operating temperature range [°C]	5 ÷ 30
Driver	standard on/off (E)
Power factor cos φ	>0,5

Mechanical features:

Assembly	mounted on wall
Material	aluminum
Color	RAL 9006 (gray, metallic, fine structure)
Diffuser	transparent polycarbonate

Note: The power shown refers to the whole system (tolerance +/- 10%).
The given luminous flux refers to LED light sources (tolerance +/- 10% depends on the value of the colour temperature).
Technical data may be changed. Photos of the luminaires may differ from reality.
Date of last update: 24-01-2023