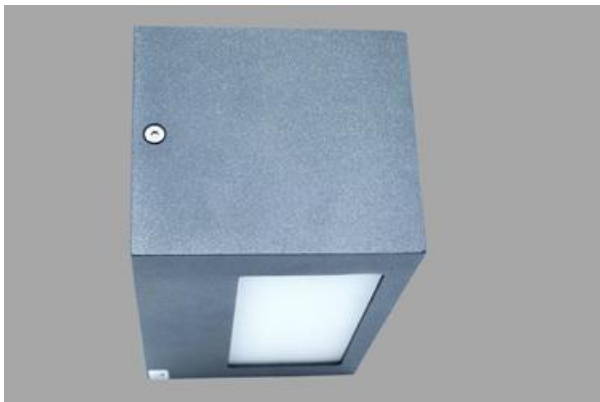
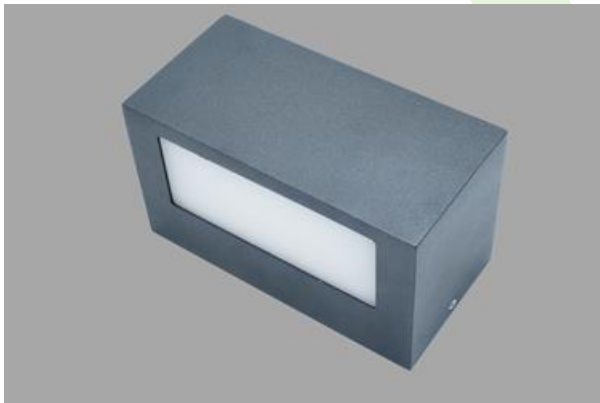
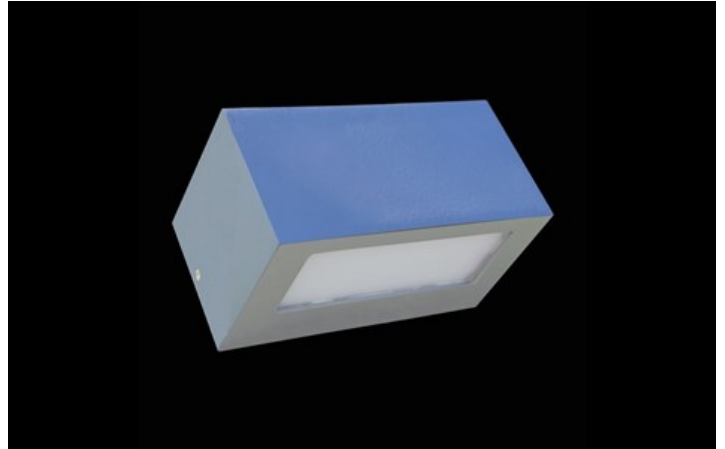




## KUBIK WALL ECO LED IP54

Outdoor luminaires



Luminaire for removable LED sources, called Retrofit, matching the G9 holder. The body is made of aluminum painted with a special facade paint resistant to weather conditions. PMMA opal. Very easy assembly and access to the interior. Recommended for balconies lighting.



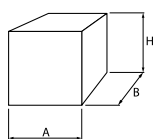
"Awangarda" residential, Warsaw



## Main parameters:

Name	Luminous flux LED [lm]	Power of luminaire [W]	Color [K]	Dimensions A x B x H [mm]
KUBIK WALL ECO LED UP OR DOWN IP54 G9	depending on applied light source	depending on applied light source	depending on applied light source	100 x 100 x 110 / 200 x 100 x 110
KUBIK WALL ECO LED UP&DOWN IP54 G9	depending on applied light source	depending on applied light source	depending on applied light source	100 x 100 x 110 / 200 x 100 x 110
KUBIK WALL ECO LED UP OR DOWN IP54 GU10	depending on applied light source	depending on applied light source	depending on applied light source	120 x 120 x 120 / 200 x 120 x 100

## Technical drawing:



## Light and electrical features:

<b>Light source</b>	RETROFIT G9 (not included)/RETROFIT GU10 (not included)
<b>Voltage</b>	220..240 V, 50..60 Hz
<b>Lifetime of LED sources [h]</b>	depending on applied light source
<b>Lx/By</b>	depending on applied light source
<b>CRI</b>	depending on applied light source
<b>SDCM (LED sources)</b>	depending on applied light source
<b>Operating temperature range [°C]</b>	
<b>Driver</b>	none

\* Variant to specify when ordering

## Mechanical features:

<b>Assembly</b>	mounted on wall
<b>Material</b>	aluminum
<b>Color</b>	RAL 7016 (anthracite, metallic, fine structure) RAL 9005 (black) RAL 9016 (white) *
<b>Diffuser</b>	PMMA opal

## Additional information:

LED light source maximum diameter (only for G9 sources): 18 mm. PIR - luminaire with motion sensor.

Note: The power shown refers to the whole system (tolerance +/- 10%).  
The given luminous flux refers to LED light sources (tolerance +/- 10% depends on the value of the colour temperature).  
Technical data may be changed. Photos of the luminaires may differ from reality.  
Date of last update: 24-01-2023