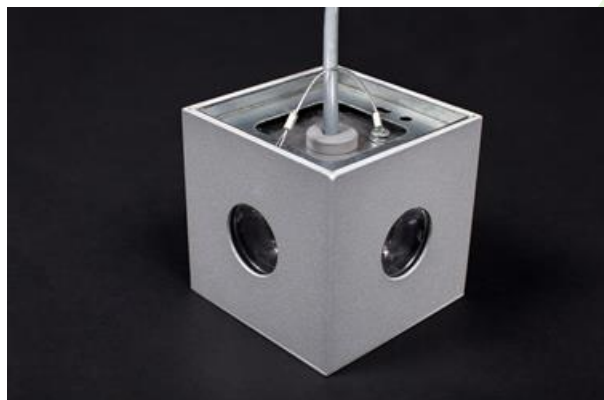




KUBIK LED

Outdoor luminaires



An outdoor fitting made for illuminating building facades and creating lighting effects. The body is made of aluminum painted with special facade paint which is resistant to bad weather conditions. Energy-efficient fitting made of component parts produced by renowned companies. It is possible to use various LED colours at the request of a customer. Ergonomic shapes of the fitting enable the application of the Kubik-type fitting almost in every building. The assembly and accessibility of the internal parts are very easy. The fitting is featured by a high level of protection against the penetration of solids and water: IP65, which renders the fitting an interesting decorative solution highlighting the architecture of an illuminated building.



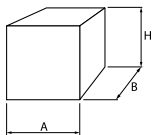
University of Ecology and Management, Warsaw



Main parameters:

Name	Luminous flux LED [lm]	Power of luminaire [W]	Color [K]	Dimensions A x B x H [mm]
KUBIK LED 1X1,7W 24°	124 / 152	3	3000 / 4000	100 x 100 x 94
KUBIK LED 1X1,7W 5°-21°	124 / 172	3	3000 / 6500	100 x 100 x 94
KUBIK LED 1X2,4W 24°	155 / 187	4	3000 / 4000	100 x 100 x 94
KUBIK LED 1X2,4W 5°-21°	155 / 187 / 213	4	3000 / 4000 / 6500	100 x 100 x 94
KUBIK LED 1X7,2W 24°	561	9	4000	150 x 150 x 135
KUBIK LED 1X7,2W 5°-21°	465 / 639	9	3000 / 6500	150 x 150 x 135
KUBIK LED 2X1,7W 24°	248 / 304	5	3000 / 4000	100 x 100 x 94
KUBIK LED 2X1,7W 5°-21°	248 / 304 / 344	5	3000 / 4000 / 6500	100 x 100 x 94
KUBIK LED 2X2,4W 24°	310 / 374	7	3000 / 4000	100 x 100 x 94
KUBIK LED 2X2,4W 5°-21°	310 / 374 / 426	7	3000 / 4000 / 6500	100 x 100 x 94
KUBIK LED 2X7,2W 5°-21°	1278	18	6500	150 x 150 x 135
KUBIK LED 3X1,7W 24°	372 / 516	7	3000 / 6500	100 x 100 x 94
KUBIK LED 3X1,7W 5°-21°	372	7	3000	100 x 100 x 94
KUBIK LED 3X2,4W 24°	465	9	3000	100 x 100 x 94
KUBIK LED 3X2,4W 5°-21°	465 / 561 / 639	9	3000 / 4000 / 6500	100 x 100 x 94
KUBIK LED 4X1,7W 24°	496 / 688	10	3000 / 6500	100 x 100 x 94
KUBIK LED 4X1,7W 5°-21°	496 / 608 / 688	10	3000 / 4000 / 6500	100 x 100 x 94

Technical drawing:



Light and electrical features:

Light source	LED
Voltage	220..240 V, 50..60 Hz
Lifetime of LED sources [h]	50000
Lx/By	L70/B50
CRI	>80
SDCM (LED sources)	5
Operating temperature range [°C]	-25 ÷ 30
Driver	standard on/off (E)
Power factor cos φ	>0,5

Mechanical features:

Assembly	mounted on wall
Material	aluminum
Color	RAL 9006 (gray, metallic, fine structure)
Diffuser	transparent polycarbonate



Note: The power shown refers to the whole system (tolerance +/- 10%).
The given luminous flux refers to LED light sources (tolerance +/- 10% depends on the value of the colour temperature).
Technical data may be changed. Photos of the luminaires may differ from reality.
Date of last update: 24-01-2023