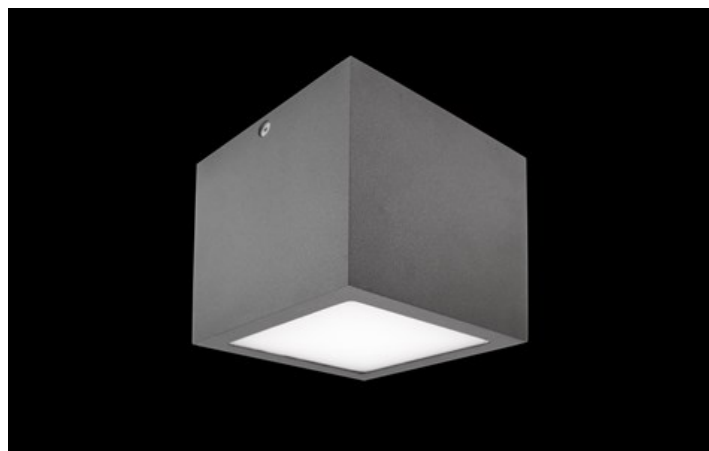


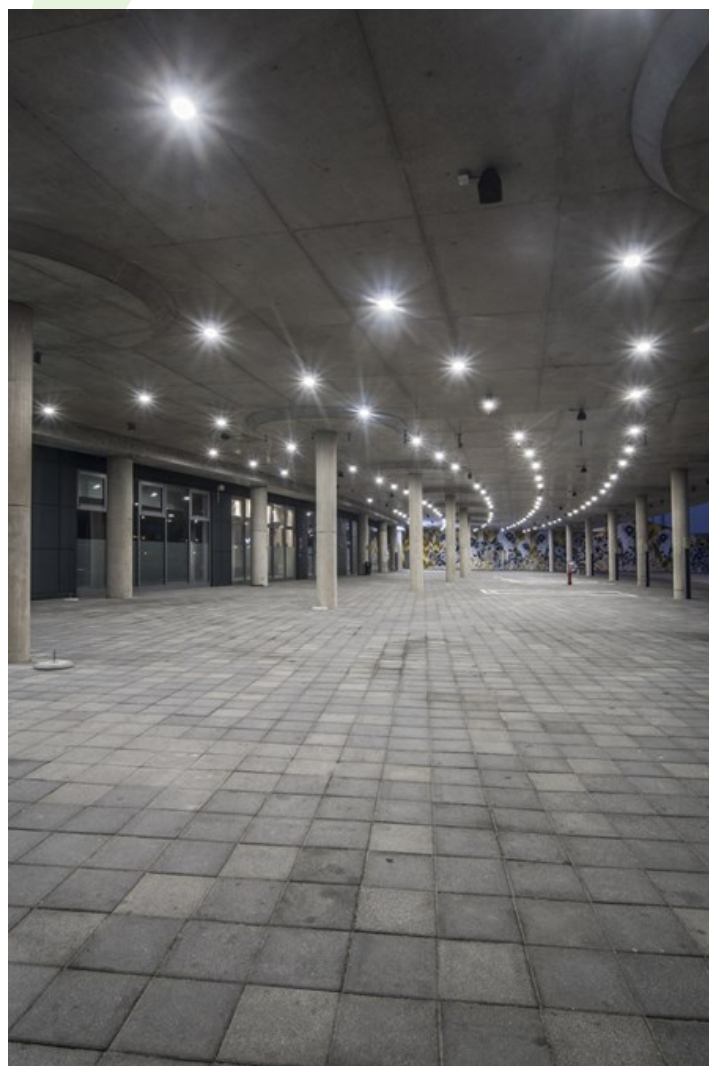


KUBIK CEILING LED

Outdoor luminaires



An outdoor fitting designed for ceiling mounting. The body is made of aluminum. Energy-efficient fitting made of component parts produced by renowned companies. Ergonomic shapes of the fitting enable the application of the Kubik-type fitting almost in every building. The assembly is very easy. Level of protection against penetration of dust and water - IP44.



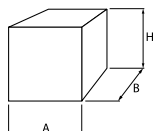
Energia stadium, Gdańsk



Main parameters:

Name	Luminous flux LED [lm]	Power of luminaire [W]	Color [K]	Dimensions A x B x H [mm]
KUBIK CEILING LED 1800	2200 / 2268	12,5	3000 / 4000	120 x 120 x 120

Technical drawing:



Light and electrical features:

Light source	LED
Voltage	220..240 V, 50..60 Hz
Lifetime of LED sources [h]	95000 (1) / 100000 (2) / 100000 (3)
Lx/By	L90/B10 (1) / L80/B10 (2) / L70/B10 (3)
CRI	85
SDCM (LED sources)	2
Operating temperature range [°C]	-25 ÷ 30
Driver	standard on/off (E)
Power factor cos φ	>0,95

Mechanical features:

Assembly	surface mounted on ceiling
Material	aluminum
Color	RAL 9005 (black)
Diffuser	PC (opalescent polycarbonate)

Note: The power shown refers to the whole system (tolerance +/- 10%).
The given luminous flux refers to LED light sources (tolerance +/- 10% depends on the value of the colour temperature).
Technical data may be changed. Photos of the luminaires may differ from reality.
Date of last update: 24-01-2023