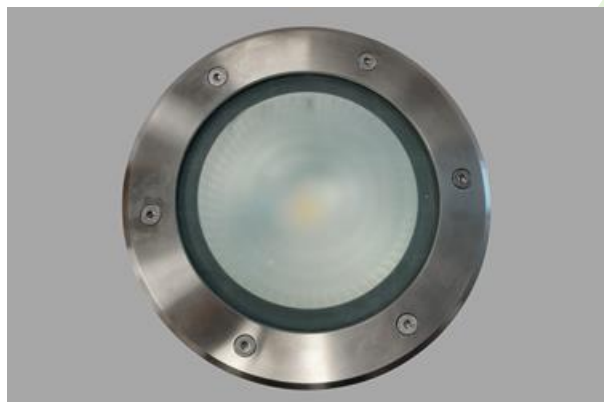




FASAD ODL04 LED

Outdoor luminaires



Suitable for ground installation. Pressure-injected aluminum die cast housing, corrosion- resisting, hardened glass diffuser of 10 mm thick, INOX stainless steel outer ring. Ring mounting to the housing is performed with the aid of stainless steel screws. Optic composes high level performance anodized aluminum. Silicone gaskets ensure life-span and exploitation. Luminaire delivered with mounting housing included. The luminaire is equipped with a 3 x 1.5 mm² power wire with a length of 1.5 m. Resistance to static load 2000 kg. Luminaire recommended for architectural and natural objects.



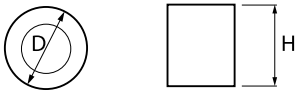
"Artystyczny Żoliborz" residential, Warsaw



Main parameters:

Name	Luminous flux LED [lm]	Power of luminaire [W]	Color [K]	Dimensions D x H [mm]
FASAD ODL04 LED 2000	2335 / 2430	23	3000 / 4000	Ø220 x 300
FASAD ODL04 LED 3000	3375 / 3505	28	3000 / 4000	Ø220 x 300

Technical drawing:



Light and electrical features:

Light source	LED
Voltage	220..240 V, 50..60 Hz
Lifetime of LED sources [h]	68000/76000
Lx/By	L90/B10
CRI	>80
SDCM (LED sources)	2
Operating temperature range [°C]	-25 ÷ 30
Driver	standard on/off (E)
Power factor cos φ	>0,95

Mechanical features:

Assembly	into the ground
Material	aluminum
Color	gray
Diffuser	hardened transparent glass SHM (hardened mat glass)

Note: The power shown refers to the whole system (tolerance +/- 10%).
The given luminous flux refers to LED light sources (tolerance +/- 10% depends on the value of the colour temperature).
Technical data may be changed. Photos of the luminaires may differ from reality.
Date of last update: 24-01-2023