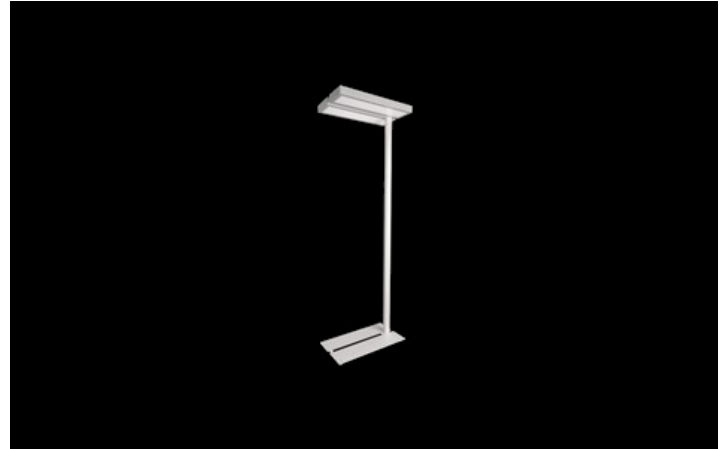


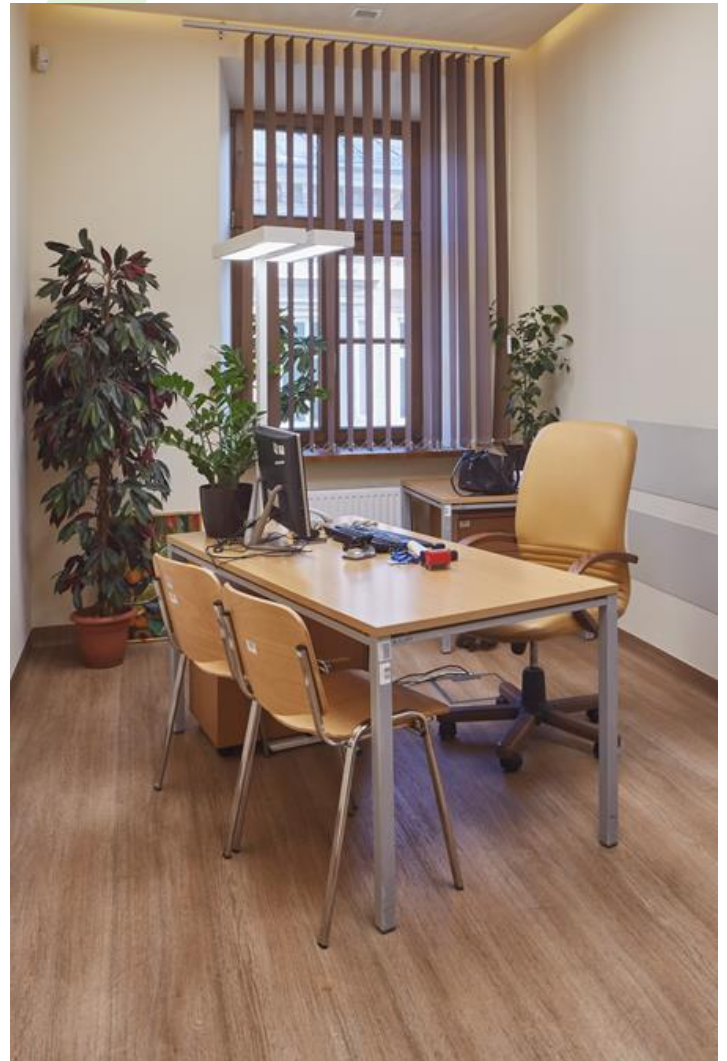


EUGEN S LED

Architectural luminaires



Simple and modern design of this standing luminaire makes it a perfect choice for offices, conference and lecture rooms, public buildings, hotels, boarding-houses, restaurants, cinemas, theatres. It gives interiors interesting, individual character. Housing of Eugén is made of aluminium, powder painted.



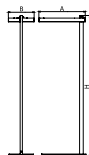
Tax Office, Kraków



Main parameters:

Name	Luminous flux LED [lm]	Power of luminaire [W]	Color [K]	Dimensions A x B x H [mm]
EUGEN S LED 2600	2525 / 2617	14,4	3000 / 4000	630 x 350 x 1904
EUGEN S LED 4400	4406 / 4565	24,7	3000 / 4000	630 x 350 x 1904
EUGEN S LED UP&DOWN 5200/2600	8520	51	4000	630 x 370 x 1910
EUGEN S LED UP&DOWN 8800/4400	13932	83	4000	630 x 370 x 1910

Technical drawing:



Light and electrical features:

Light source	LED
Voltage	220..240 V, 50..60 Hz
Lifetime of LED sources [h]	100000 (1) / 147000 (2)
Lx/By	L80/B10 (1) / L70/B50 (2)
CRI	>80
SDCM (LED sources)	3
Operating temperature range [°C]	5 ÷ 30
Driver	standard on/off (E) DIM DALI, motion & daylight sensor (EDDM-IDIM316) *
Power factor cos φ	>0,95

* Variant to specify when ordering

Mechanical features:

Assembly	for the ground
Material	aluminum
Color	RAL 9006 (gray, metallic, fine structure) RAL 9016 (white) *
Diffuser	Micro-PRM (micro-prismatic diffuser PMMA) PLX (PMMA opal) PLX-T/Micro-PRM (transparent PMMA/micro-prismatic diffuser PMMA) [up/down]

Additional information:

The luminaire can be made in CLO version.

Note: The power shown refers to the whole system (tolerance +/- 10%).
The given luminous flux refers to LED light sources (tolerance +/- 10% depends on the value of the colour temperature).
Technical data may be changed. Photos of the luminaires may differ from reality.
Date of last update: 24-01-2023