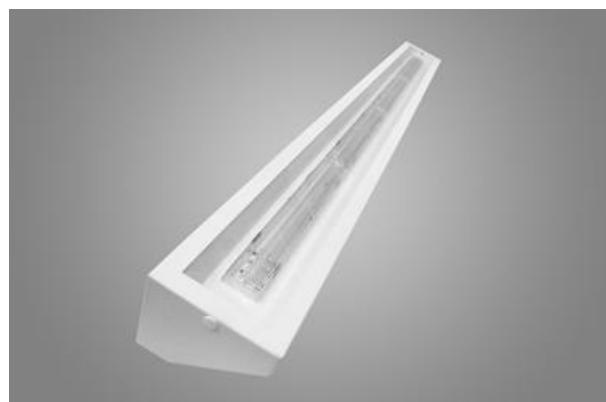




BHU LINEMED TRIANGLE LED

Clean luminaires - surface



Modern lighting in hospital wards, outpatient clinics and other health care institutions is not just the question of general ambient lighting. Modern buildings require special devices which combine elements of lighting together with life rescuing equipment in one installation. The bed head system is certainly a device of this kind. With its modern design and high quality material used for its construction as well as possibility of installation to it different kinds of equipment makes the system a helpful instrument for patients and medical staff. The luminaire is equipped with two 230 V power sockets and three key switches.

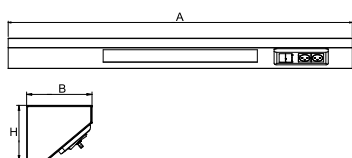




Main parameters:

Name	Luminous flux LED [lm]	Power of luminaire [W]	Color [K]	Dimensions A x B x H [mm]
BHU LINEMED TRIANGLE LED P-2600-1300	3788,2 / 3925,6	21,7	3000 / 4000	1250 x 130 x 110
BHU LINEMED TRIANGLE LED P-4400-2200	6608,3 / 6847,7	35,3	3000 / 4000	1250 x 130 x 110
BHU LINEMED TRIANGLE LED P-5200-1300	6313,7 / 6542,7	34,8	3000 / 4000	1250 x 130 x 110
BHU LINEMED TRIANGLE LED P-8000-2000	10783 / 11351,2	64,8	3000 / 4000	1250 x 130 x 110
BHU LINEMED TRIANGLE LED P-8800-2200	11013,9 / 11412,9	60,5	3000 / 4000	1250 x 130 x 110

Technical drawing:



Light and electrical features:

Light source	LED
Voltage	220..240 V, 50..60 Hz
Lifetime of LED sources [h]	100000 (1) / 147000 (2)
Lx/By	L80/B10 (1) / L70/B10 (2)
CRI	>80
SDCM (LED sources)	3
Operating temperature range [°C]	5 ÷ 30
Driver	standard on/off (E)
Power factor cos φ	>0,95

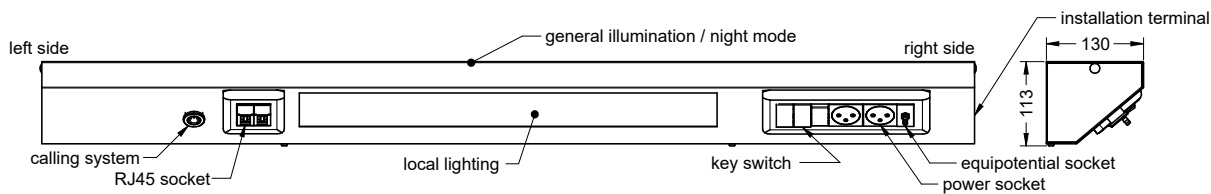
Mechanical features:

Assembly	mounted on wall
Material	steel sheet
Color	RAL 9003 (white)
Diffuser	OPTICS (optical system based on lenses) / PLX (PMMA opal) PLX (PMMA opal)

Note: The power shown refers to the whole system (tolerance +/- 10%).
The given luminous flux refers to LED light sources (tolerance +/- 10% depends on the value of the colour temperature).
Technical data may be changed. Photos of the luminaires may differ from reality.
Date of last update: 24-01-2023

Additional information:

LEGEND



BHU LINEMED W1-P- 8800 - 2200 - ON -3-1-1EP-3- B E 34 840
BHU LINEMED W1-

installation terminal:
left side - **L**
right side - **P**

general illumination:
LED 1300-8800 [lm]

local illumination:
LED 650-4000 [lm]

night mode:
LED - **ON**
lack - **B**
(**ON** - night mode)

power socket:
* quantity - **X**
lack - **B**

RJ45 socket:
* quantity - **X**
lack - **B**

equipotential socket:
* quantity - **XEP**
lack - **B**

key switch:
* quantity - **X**
lack - **B**

calling system:
* adaptation to calling system - **SP**
lack - **B**

Control gear (drivers):
* electronical driver - **E**
* DIM DALI driver - **EDD**
* TOUCH DIM driver - **EDT**

Body colours:
* white (RAL9016) - **34**
* dark grey (RAL9007) - **22**
* grey (RAL9006) - **21**
* black (RAL9005) - **04**

LED parameters (CRI and colour of the light):
* CRI>80, 4000K - **840**
* CRI>80, 3000K - **830**

* - contact to the manufacturer is required

Caution:

The maximum frame size per side is 10 modules but each element such as:

- key switch
- equipotentialisation socket
- RJ socket

is counted as 1 module. Only electrical socket is counted as 2 modules.