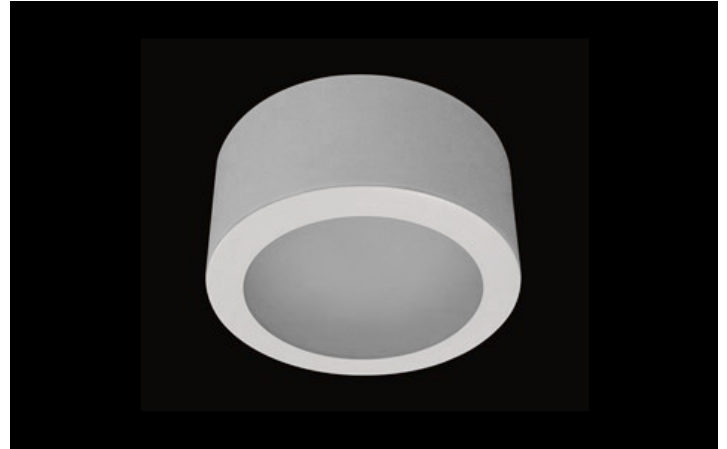


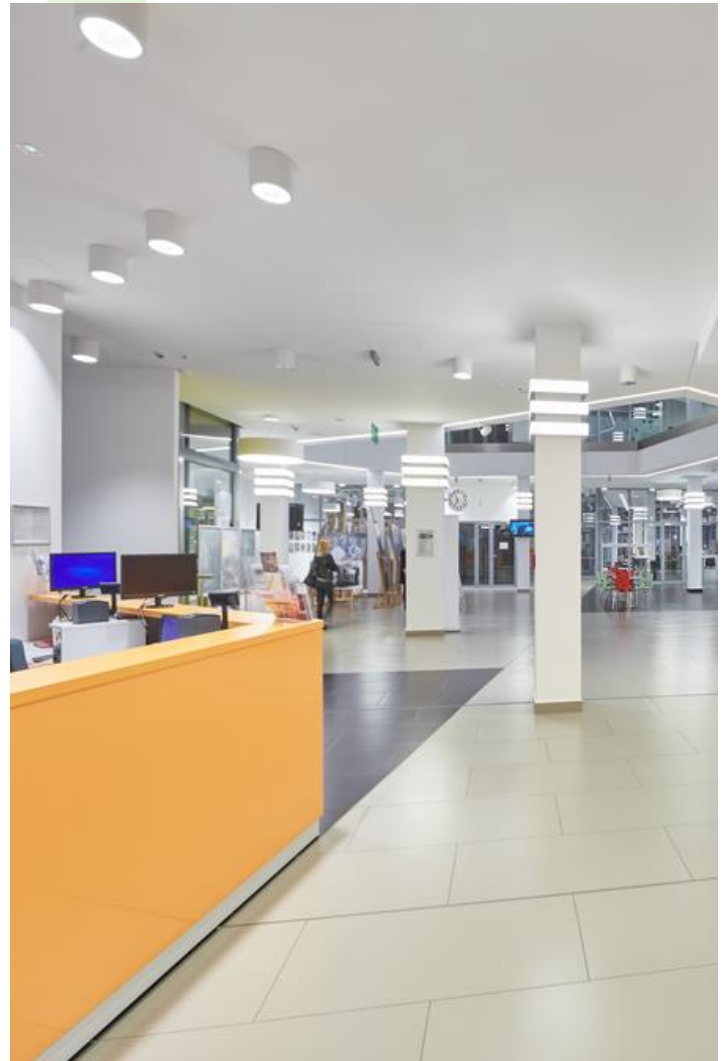


## BERYL LED NO

Surface mounted luminaires



Surface mounted luminaire of down light type which is built from powder coated steel sheet. IP20 tightness level. Its diffuser optionally can be made from opal PMMA. BERYL LED NO/NK luminaire is perfect to be used in prestige interiors such as hotels, banks, offices, boutiques, and car showrooms.



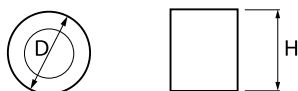
Cultural Center, Kozenice



## Main parameters:

Name	Luminous flux LED [lm]	Power of luminaire [W]	Color [K]	Dimensions D x H [mm]
BERYL LED NO 1500	1500	10	3000 / 4000	Ø210 x 110
BERYL LED NO 2200	2193 / 2334	16	3000 / 4000	Ø210 x 110
BERYL LED NO 3000	2791 / 2970	21	3000 / 4000	Ø210 x 110

## Technical drawing:



## Light and electrical features:

Light source	LED
Voltage	220..240 V, 50..60 Hz
Lifetime of LED sources [h]	60000
Lx/By	L80/B10
CRI	>80
SDCM (LED sources)	3
Operating temperature range [°C]	5 ÷ 30
Driver	standard on/off (E)
Power factor cos φ	>0,95

## Mechanical features:

Assembly	surface mounted on ceiling
Material	steel sheet
Color	RAL 9016 (white)
Diffuser	PLX (PMMA opal)

Note: The power shown refers to the whole system (tolerance +/- 10%).  
The given luminous flux refers to LED light sources (tolerance +/- 10% depends on the value of the colour temperature).  
Technical data may be changed. Photos of the luminaires may differ from reality.  
Date of last update: 24-01-2023