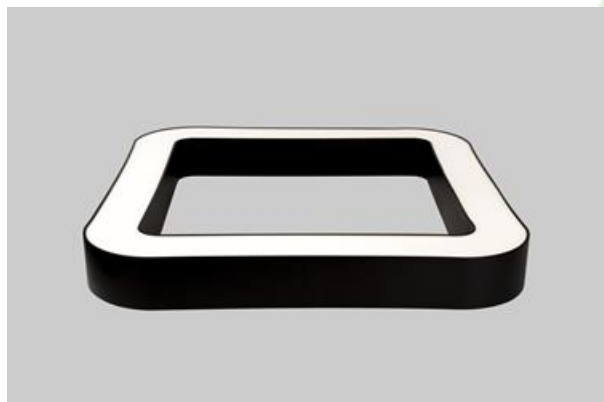
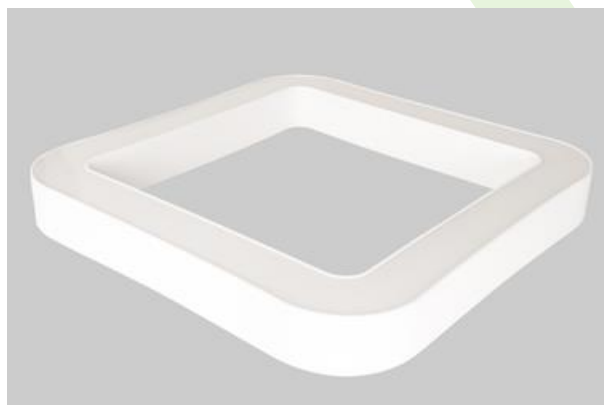




ARTSHAPE SQ LED TUNABLE WHITE

Tunable White luminaires



Modernistic architectural luminaire in shapes of popular geometrical figures and fashionable design of simple form. The luminaire is adjusted to be mounted on slings. It is equipped with highly efficient LED light sources. Various options of luminous flux and colour temperature are available. The sides of the shade are made of thin-walled aluminium profile. In combination with a possibility of painting according to RAL palette, the luminaires allow to achieve a unique arrangement of various premises. Perfectly even surface-emitting is made of material which has very good light transmittance factor and has good diffusion parameters. This luminaire is dedicated to room of high stylistic requirements. It is perfect for hotel atrium, office receptions, architectural studios, conference rooms or halls and corridors in exclusive buildings as well as for theatres or modern shops in shopping centres. LED modules adjusted to regulate the color temperature of light in the range from 2700 K to 6500 K.

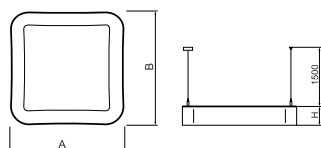




Main parameters:

Name	Luminous flux LED [lm]	Power of luminaire [W]	Color [K]	Dimensions A x B x H [mm]
ARTSHAPE SQ LED SMALL EDGE TW 5500	5400	52	2700 ÷ 6500	660 x 660 x 85
ARTSHAPE SQ LED MEDIUM EDGE TW 8000	7800	75	2700 ÷ 6500	930 x 930 x 85
ARTSHAPE SQ LED LARGE EDGE TW 10000	10440	100	2700 ÷ 6500	1200 x 1200 x 85

Technical drawing:



Light and electrical features:

Light source	LED
Voltage	220..240 V, 50..60 Hz
Lifetime of LED sources [h]	60000
Lx/By	L80/B10
CRI	>80
SDCM (LED sources)	4
Operating temperature range [°C]	0 ÷ 30
Driver	DIM DALI (EDD)
Power factor cos φ	>0,95

Mechanical features:

Assembly	surface mounted on slings
Material	aluminum
Color	RAL 9016 (white)
Diffuser	PLX (PMMA opal)

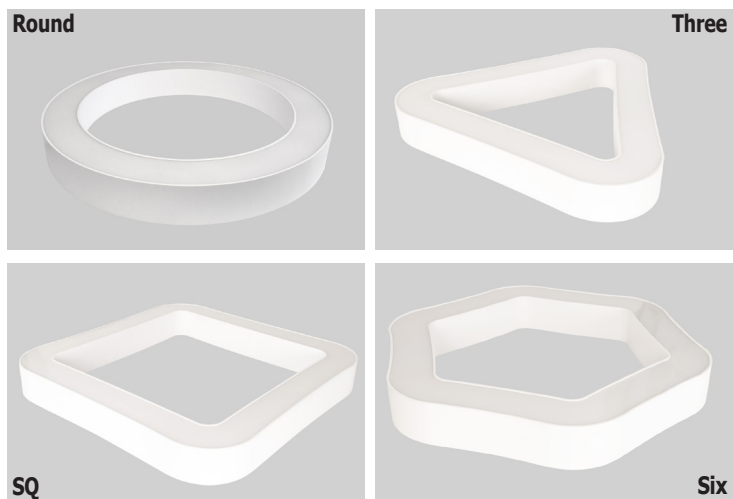
Additional information:

On individual request it is possible to make EDGE luminaires in larger sizes and in RGBW versions. These luminaires are characterised by tightly closed chamber of LED light sources (IP65) thanks to this impurities are not visible on the diffuser for a long time of exploitation. Temperature range for storage and transport from 0° C to 40° C. The luminaire can be made in CLO version.

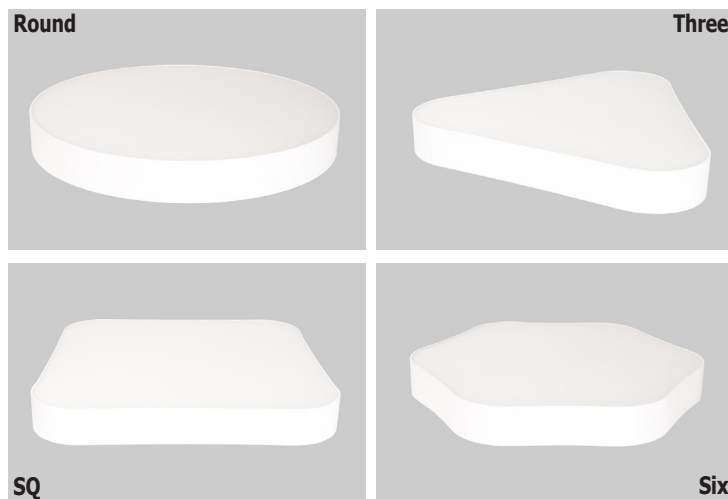
Note: The power shown refers to the whole system (tolerance +/- 10%).
The given luminous flux refers to LED light sources (tolerance +/- 10% depends on the value of the colour temperature).
Technical data may be changed. Photos of the luminaires may differ from reality.
Date of last update: 24-01-2023

Dodatkowe informacje / Additional information / Zusätzliche Informationen:

Artshape EDGE



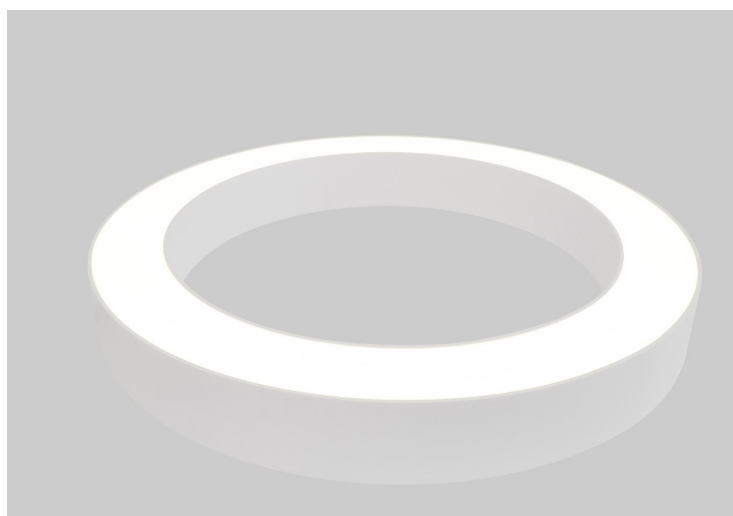
Artshape FULL



Artshape Up & Down (Round / Three / SQ / Six / Line)



Artshape TW (Tunable white)
(Round / Three / Sq / Six / Line)



2700 ÷ 6500 K

Artshape RGB
(Round Edge / Three Edge / Sq Edge / Six Edge)

