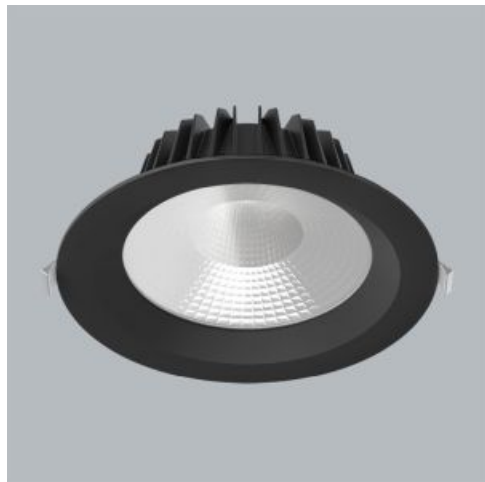


Product: BERYL GEN2 PRO O-5 6500 SLIGHT E-BT IP20/54 04 940

Index: 19.4418.H649.04



Description

Beryl Gen2 Pro is a modern, elegant series of recessed LED downlights designed for general indoor lighting applications in modular and plasterboard suspended ceilings. The luminaire achieves an efficiency of up to 151 lm/W and is available in ten different diameters with a choice of Flat or Slight frame. Housing is made of aluminium and offered in black or white finish. Optical systems include PLX (PMMA opal) diffuser or transparent glass. Several beam angles are available to adapt the light distribution to project requirements. The product integrates LED sources with colour temperatures of 2700 K, 3000 K, or 4000 K, high colour rendering index CRI > 90, and colour tolerance SDCM ≤ 3. The LED modules have a long service life of 100,000 h (L80/B10). The luminaire is suitable for operation in ambient temperatures from +5 °C to +35 °C. It provides ingress protection up to IP20/IP54, mechanical resistance IK06, and electrical protection class II. Control options include standard electronic ON/OFF or DALI drivers with dimming capabilities.

Product information

Category	Recessed luminaires
Family	BERYL GEN2 PRO
Name	BERYL GEN2 PRO O-5 6500 SLIGHT E-BT IP20/54 04 940
Index	19.4418.H649.04
EAN	5902107688448



Light and electrical data

Light source	LED
Luminous flux LED [lm]	6753
LED power [W]	35,3
Luminaire luminous flux [lm]	5544
Power of luminaire [W]	39,5
Luminaire's light efficiency [lm/W]	140,4
Color of the light [K]	4000
CRI	>90
SDCM (LED sources)	3
Beam angle [°]	(C0-C180) / (C90-C270) - 59,6° / 59,8°
Photobiological risk class (IEC/EN 62471)	RG0
Protection against electric shock	II
Protection degree	IP20/54
Voltage	220..240 V, 50..60 Hz
Lifetime of LED sources [h]	100000
Lx/By	L80/B10
Operating temperature range [°C]	5 ÷ 35
Driver	bluetooth (E-BT)
Power factor cos φ	>0,95
Circuit load capacity	35 (B10), 55 (B16), 35 (C10), 55 (C16)

Mechanical data



Assembly	mounted in module ceilings, as well as plasterboard ceilings
Material	aluminum
Color	RAL 9005 (black)
Diffuser	transparent glass
Impact resistant	IK06
Dimensions [mm]	Ø250 x 95
Mounting hole [mm]	Ø200

A graph of light

