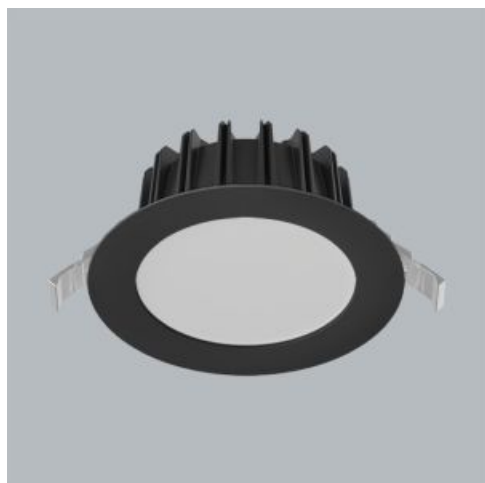


**Product:** BERYL GEN2 PRO O-3 4500 PLX FLAT E-BT IP20/54 04 927

**Index:** 19.4418.C479.04



## Description

Beryl Gen2 Pro is a modern, elegant series of recessed LED downlights designed for general indoor lighting applications in modular and plasterboard suspended ceilings. The luminaire achieves an efficiency of up to 151 lm/W and is available in ten different diameters with a choice of Flat or Slight frame. Housing is made of aluminium and offered in black or white finish. Optical systems include PLX (PMMA opal) diffuser or transparent glass. Several beam angles are available to adapt the light distribution to project requirements. The product integrates LED sources with colour temperatures of 2700 K, 3000 K, or 4000 K, high colour rendering index CRI > 90, and colour tolerance SDCM ≤ 3. The LED modules have a long service life of 100,000 h (L80/B10). The luminaire is suitable for operation in ambient temperatures from +5 °C to +35 °C. It provides ingress protection up to IP20/IP54, mechanical resistance IK06, and electrical protection class II. Control options include standard electronic ON/OFF or DALI drivers with dimming capabilities.

## Product information

Category	<b>Recessed luminaires</b>
Family	<b>BERYL GEN2 PRO</b>
Name	<b>BERYL GEN2 PRO O-3 4500 PLX FLAT E-BT IP20/54 04 927</b>
Index	<b>19.4418.C479.04</b>
EAN	<b>5902107685355</b>



## Light and electrical data

Light source	<b>LED</b>
Luminous flux LED [lm]	<b>4452</b>
LED power [W]	<b>23,3</b>
Luminaire luminous flux [lm]	<b>3339</b>
Power of luminaire [W]	<b>26,1</b>
Luminaire's light efficiency [lm/W]	<b>127,9</b>
Color of the light [K]	<b>2700</b>
CRI	<b>&gt;90</b>
SDCM (LED sources)	<b>3</b>
Beam angle [°]	<b>(C0-C180) / (C90-C270) - 91,8° / 92,2°</b>
Photobiological risk class (IEC/EN 62471)	<b>RG0</b>
Protection against electric shock	<b>II</b>
Protection degree	<b>IP20/54</b>
Voltage	<b>220..240 V, 50..60 Hz</b>
Lifetime of LED sources [h]	<b>100000</b>
Lx/By	<b>L80/B10</b>
Operating temperature range [°C]	<b>5 ÷ 35</b>
Driver	<b>bluetooth (E-BT)</b>
Power factor cos φ	<b>&gt;0,95</b>
Circuit load capacity	<b>50 (B10), 80 (B16), 50 (C10), 80 (C16)</b>

**Mechanical data**



Assembly	<b>mounted in module ceilings, as well as plasterboard ceilings</b>
Material	<b>aluminum</b>
Color	<b>RAL 9005 (black)</b>
Diffuser	<b>PLX (PMMA opal)</b>
Impact resistant	<b>IK04</b>
Dimensions [mm]	<b>Ø168 x 80</b>
Mounting hole [mm]	<b>Ø150</b>

**A graph of light**

