

Product: X-LINE SLIM SURFACE LED 13200 MICRO-PRM E 04 830 LINE-S / L-3370MM

Index: 19.4414.C611.04



Description

Luminaire for building long light lines made of aluminum profile. Comparing to the traditional X-Line LED, size of the luminaire has been reduced, and all construction has been closed in a narrow 48 mm profile, which gives now a more elegant form of the product. The X-Line Slim uses a PLX or Micro-PRM opal diffuser. All of this allows to manipulate light and create lighting systems, facilitating the creation of comfortable vision in the interiors and their aesthetic appearance. The X-Line Slim luminaire is designed for mounting on ceiling. Power supply connection only via EL-marked luminaire.

Product information

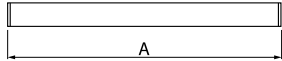
Category	Surface mounted luminaires
Family	X-LINE SLIM SURFACE LED LINE
Name	X-LINE SLIM SURFACE LED 13200 MICRO-PRM E 04 830 LINE-S / L-3370MM
Index	19.4414.C611.04
EAN	5902107556990



Light and electrical data

Light source	LED
Luminous flux LED [lm]	13326
LED power [W]	65,4
Luminaire luminous flux [lm]	9861,2
Power of luminaire [W]	74,3
Luminaire's light efficiency [lm/W]	132,7
Color of the light [K]	3000
CRI	>80
SDCM (LED sources)	3
Beam angle [°]	(C0-C180) / (C90-C270) - 88,4° / 86°
Photobiological risk class (IEC/EN 62471)	RG0
Protection against electric shock	I
Protection degree	IP40
Voltage	220..240 V, 50..60 Hz
Lifetime of LED sources [h]	100000
Lx/By	L80/B10
Operating temperature range [°C]	5 ÷ 35
Driver	standard on/off (E)
Power factor cos φ	>0,95
Circuit load capacity	11 (B10), 18 (B16), 19 (C10), 31 (C16)

Mechanical data



Assembly	surface mounted on ceiling
Material	aluminum
Color	RAL 9005 (black)
Diffuser	Micro-PRM (micro-prismatic diffuser PMMA)
Impact resistant	IK04
Dimensions [mm]	3370 x 48 x 70

A graph of light

