

Product: GRANVIA SPOTS 1x 2000 24° EDD 34 BREAD / L-600MM
Index: 19.4406.21E3.34



Description

GRANVIA SPOTS is a high-performance accent lighting module for the GRANVIA trunking system, designed for precise illumination in supermarkets and commercial spaces. Available in three lengths with up to three Luxcan Pro projectors, it offers flexibility with different beam angles and specialized LED light sources like MEAT, BREAD, FRUIT and PEARL WHITE and high CRI options to ensure vivid, true-to-life colours and enhanced product display.

Product information

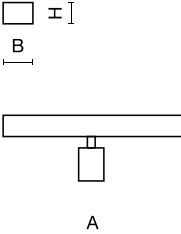
Category	Projectors
Family	GRANVIA SPOTS
Name	GRANVIA SPOTS 1x 2000 24° EDD 34 BREAD / L-600MM
Index	19.4406.21E3.34



Light and electrical data

Light source	LED
Luminous flux LED [lm]	1732
LED power [W]	10,9
Luminaire luminous flux [lm]	1315,3
Power of luminaire [W]	13,9
Luminaire's light efficiency [lm/W]	94,6
Color of the light [K]	BREAD
CRI	>85
SDCM (LED sources)	3
Photobiological risk class (IEC/EN 62471)	RG0
Protection against electric shock	II
Protection degree	IP20
Voltage	220..240 V, 50..60 Hz
Lifetime of LED sources [h]	100000
Lx/By	L80/B10
Operating temperature range [°C]	5 ÷ 35
Driver	DIM DALI (EDD)
Power factor cos φ	>0,95
Circuit load capacity	20 (B10), 31 (B16), 33 (C10), 53 (C16)

Mechanical data



Assembly	directly mounted to ceiling construction or surface mounted on slings
Material	steel sheet and aluminum
Color	RAL 9016 (white)
Diffuser	transparent PMMA
Impact resistant	IK04
Dimensions [mm]	600 x 72 x 50

Luminous flux tolerance +/- 10%. Power tolerance +/- 10%.
Technical data may be changed. Photos of the luminaires may differ from reality.
Date of last update: 30-06-2025