

**Product:** GRANVIA SPOTS 1x 2000 15° E 34 PEARL WHITE / L-600MM

**Index:** 19.4406.11J1.34



## Description

GRANVIA SPOTS is a high-performance accent lighting module for the GRANVIA trunking system, designed for precise illumination in supermarkets and commercial spaces. Available in three lengths with up to three Luxcan Pro projectors, it offers flexibility with different beam angles and specialized LED light sources like MEAT, BREAD, FRUIT and PEARL WHITE and high CRI options to ensure vivid, true-to-life colours and enhanced product display.

## Product information

Category	<b>Projectors</b>
Family	<b>GRANVIA SPOTS</b>
Name	<b>GRANVIA SPOTS 1x 2000 15° E 34 PEARL WHITE / L-600MM</b>
Index	<b>19.4406.11J1.34</b>



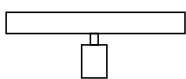
## Light and electrical data

Light source	<b>LED</b>
Luminous flux LED [lm]	<b>1774,5</b>
LED power [W]	<b>10,9</b>
Luminaire luminous flux [lm]	<b>1347,1</b>
Power of luminaire [W]	<b>12,8</b>
Luminaire's light efficiency [lm/W]	<b>105,2</b>
Color of the light [K]	<b>PEARL WHITE</b>
CRI	<b>&gt;90</b>
SDCM (LED sources)	<b>3</b>
Photobiological risk class (IEC/EN 62471)	<b>RG0</b>
Protection against electric shock	<b>II</b>
Protection degree	<b>IP20</b>
Voltage	<b>220..240 V, 50..60 Hz</b>
Lifetime of LED sources [h]	<b>100000</b>
Lx/By	<b>L80/B10</b>
Operating temperature range [°C]	<b>5 ÷ 35</b>
Driver	<b>standard on/off (E)</b>
Power factor cos φ	<b>&gt;0,95</b>
Circuit load capacity	<b>22 (B10), 34 (B16), 33 (C10), 54 (C16)</b>

## Mechanical data

□ ±]

B



A

Assembly	<b>directly mounted to ceiling construction or surface mounted on slings</b>
Material	<b>steel sheet and aluminum</b>
Color	<b>RAL 9016 (white)</b>
Diffuser	<b>transparent PMMA</b>
Impact resistant	<b>IK04</b>
Dimensions [mm]	<b>600 x 72 x 50</b>