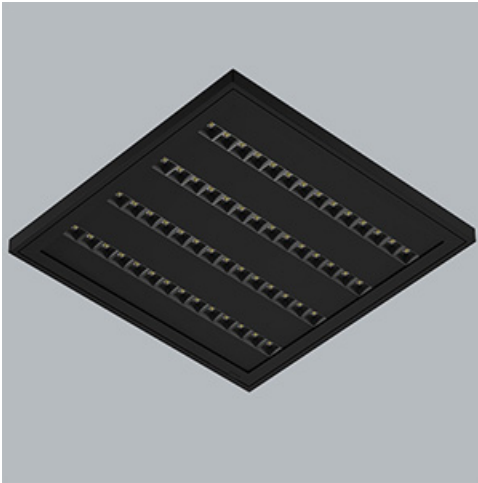


**Product:** DOMINO CLEAN SURFACE LOW UGR LED 8400 SH RASTER DAISY-BLACK-WIDE EDD IP65 04 840 / 645X645MM  
**Index:** 19.4405.1223.04



## Description

Surface mounted luminary. Equipped with highly efficient LED light sources. The Domino Clean Surface LOW UGR LED uses an anti-glare louvre which reduces glare and directs light precisely. Housing made of steel sheet. Significant diversity of the value of luminous flux. Colour rendering index CRI: 80. Level of tightness IP65.

## Product information

Category	Clean luminaires - surface
Family	DOMINO CLEAN SURFACE LOW UGR LED
Name	DOMINO CLEAN SURFACE LOW UGR LED 8400 SH RASTER DAISY-BLACK-WIDE EDD IP65 04 840 / 645X645MM
Index	19.4405.1223.04
EAN	5902107871345



## Light and electrical data

Light source	LED
Luminous flux LED [lm]	9348
LED power [W]	43
Luminaire luminous flux [lm]	8039
Power of luminaire [W]	48,1
Luminaire's light efficiency [lm/W]	167,1
Color of the light [K]	4000
CRI	>80
SDCM (LED sources)	3
Beam angle [°]	(C0-C180) / (C90-C270) - 71,6° / 75,6°
Photobiological risk class (IEC/EN 62471)	RG0
Protection against electric shock	I
Protection degree	IP65
Voltage	220..240 V, 50..60 Hz
Lifetime of LED sources [h]	100000
Lx/By	L80/B10
Operating temperature range [°C]	5 ÷ 30
Driver	DIM DALI (EDD)
Power factor cos φ	0,95
Circuit load capacity	14 (B10), 23 (B16), 22 (C10), 35 (C16)

**Mechanical data**



Assembly	surface mounted on ceiling
Material	steel sheet
Color	RAL 9005 (black)
Diffuser	RASTER (anti-glare louver)
Impact resistant	IK08
Dimensions [mm]	645 x 645 x 40

**A graph of light**

