

Product: ARUNA SLIM M LED 8000 OPTICS-1L E 34 840 / L-1200

Index: 19.4404.1321.34



Description

LED luminary dedicated to be mounted on suspended modular ceilings or using an adaptor frame in plasterboard ceilings (Aruna Slim M LED), directly on the ceiling (Aruna Slim Surface LED) or using slings (Aruna Slim Suspended LED). Equipped with highly efficient LED light sources. Symmetric or asymmetric light distribution. Housing made of steel sheet. Standard colour of the luminaire is white. Colour rendering index CRI: 80.

Product information

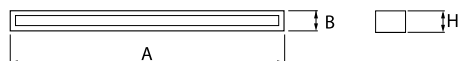
Category	Recessed luminaires
Family	ARUNA SLIM M LED
Name	ARUNA SLIM M LED 8000 OPTICS-1L E 34 840 / L-1200
Index	19.4404.1321.34
EAN	5902107195502



Light and electrical data

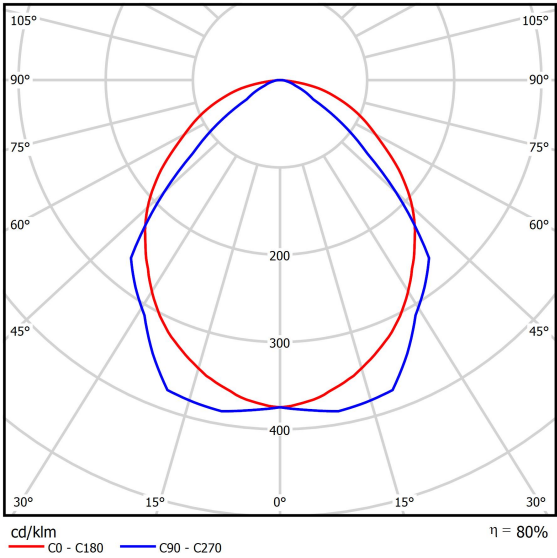
Light source	LED
Luminous flux LED [lm]	8330
LED power [W]	51
Luminaire luminous flux [lm]	6649
Power of luminaire [W]	57
Luminaire's light efficiency [lm/W]	116,6
Color of the light [K]	4000
CRI	>80
SDCM (LED sources)	3
Beam angle [°]	(C0-C180) / (C90-C270) - 100,4° / 90,8°
Protection against electric shock	I
Protection degree	IP20
Voltage	220..240 V, 50..60 Hz
Lifetime of LED sources [h]	100000 (1) / 147000 (2)
Lx/By	L80/B10 (1) / L70/B50 (2)
Operating temperature range [°C]	5 ÷ 30
Driver	standard on/off (E)
Power factor cos φ	>0,95
Circuit load capacity	16 (B10), 26 (B16), 23 (C10), 37 (C16)

Mechanical data



Assembly	mounted in module ceilings or using an adaptor frame in plasterboard ceilings
Material	steel sheet
Color	RAL 9016 (white)
Diffuser	OPTICS (optical system based on lenses)
Impact resistant	IK04
Dimensions [mm]	1193 x 80 x 40

A graph of light



Accessories

Index 01ARNL-ASUP
Name ARUNA SLIM LED HANDLE FOR
SUSPENSION

