

Product: S-LINE SLIM 3500 FLOOD E-48V DC 34 930 / L-1259MM
Index: 19.4393.1231.34



Description

S-LINE SLIM is an innovative lighting solution designed with an ultra-sleek aluminum profile (Ø30mm), making it as versatile as it is stylish. This system not only supports standalone lighting fixtures but also enables the creation of intricate, large-scale systems with different shapes by combining different types of lights and numerous accessories, allowing for endless configurations. With S-LINE SLIM, designers have complete flexibility to bring creative visions to life, with a very quick installation, using a tool-free, reliable "jack" system for quick assembly. Each lighting module rotates a full 360 degrees on its axis, offering the option for both direct illumination and indirect lighting, by reflecting light. The S-LINE SLIM SYSTEM includes three distinct types of light modules to suit any design need: opal diffuser for soft, even lighting, UGR<19 Louver with 30° or 45° optics for glare control and adjustable spotlights for accent lighting with beam angles of 15°, 24°, and 36°. Luminaire is available in two lengths (859mm - 18W and 1259mm - 24W) and three colour temperatures (2700K, 3000K, and 4000K) with a CRI>90, S-LINE SLIM delivers exceptional colour accuracy and lighting quality. The system's accessories open up countless installation possibilities: suspended or surface-mounted, in L, T, or X shapes, adapting effortlessly to various architectural needs, also thanks to the 180° adjustable corner connector allowing the creation of creative and irregular shapes.

Product information

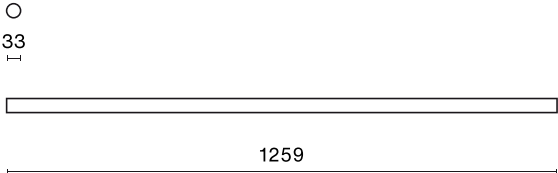
Category	Surface mounted luminaires
Family	S-LINE SLIM
Name	S-LINE SLIM 3500 FLOOD E-48V DC 34 930 / L-1259MM
Index	19.4393.1231.34



Light and electrical data

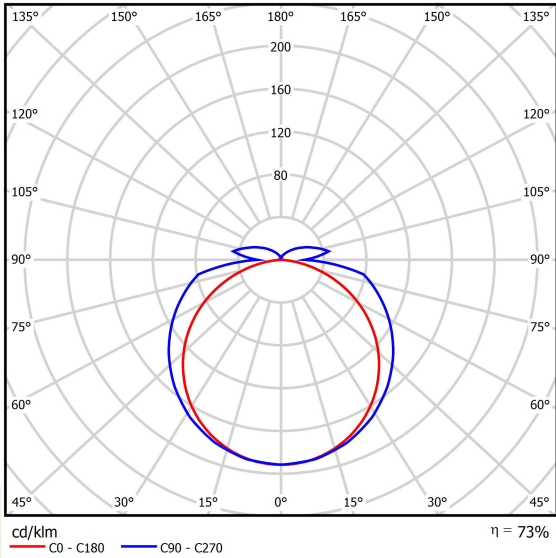
Light source	LED
Luminous flux LED [lm]	3442,7
LED power [W]	24,2
Luminaire luminous flux [lm]	2513,1
Power of luminaire [W]	26
Luminaire's light efficiency [lm/W]	96,7
Color of the light [K]	3000
CRI	>90
SDCM (LED sources)	3
Beam angle [°]	(C0-C180) / (C90-C270) - 113,6° / 141,8°
Photobiological risk class (IEC/EN 62471)	RG0
Protection against electric shock	III
Protection degree	IP20
Voltage	48 V DC
Lifetime of LED sources [h]	36000
Lx/By	L80/B10
Operating temperature range [°C]	5 ÷ 35
Driver	standard on/off (E)

Mechanical data



Assembly	surface mounted on slings or mounted on wall
Material	aluminum
Color	RAL 9016 (white)
Diffuser	PLX (PMMA opal)
Impact resistant	IK04
Dimensions [mm]	Ø33 x 1259

A graph of light



Accessories

Index 19.4393.0012.34/
19.4393.0013.34

Name S-LINE SLIM ACCESSORIES
WALL MOUNTED CONNECTOR
TYPE-I 34 NO DC/ S-LINE SLIM
ACCESSORIES WALL MOUNTED
CONNECTOR TYPE-I 34



Index 19.4393.0014.34

Name S-LINE SLIM ACCESSORIES
WALL MOUNTED CONNECTOR
TYPE-I 34 WITH CABLE



Index 19.4393.0015.34/
19.4393.0016.34

Name S-LINE SLIM ACCESSORIES
WALL MOUNTED CONNECTOR
TYPE-L 34/ S-LINE SLIM
ACCESSORIES WALL MOUNTED
CONNECTOR TYPE-L 34 WITH
CABLE



Index 19.4393.0017.34

Name S-LINE SLIM ACCESSORIES
WALL MOUNTED CONNECTOR
TYPE-T 34



Index 19.4393.0018.34

Name S-LINE SLIM ACCESSORIES
WALL MOUNTED CONNECTOR
TYPE-X 34



Index 19.4393.0006.34

Name S-LINE SLIM ACCESSORIES
CONNECTOR TYPE-L 34 WITH
CABLE



Index 19.4393.0007.34/
19.4393.0008.34

Name S-LINE SLIM ACCESSORIES
CONNECTOR TYPE-L 34/ S-LINE
SLIM ACCESSORIES
CONNECTOR TYPE-L 34 NO DC



Index 19.4393.0009.34

Name S-LINE SLIM ACCESSORIES
CONNECTOR TYPE-T 34



Index 19.4393.0010.34

Name S-LINE SLIM ACCESSORIES
CONNECTOR TYPE-X 34



Index 19.4393.0011.34

Name S-LINE SLIM ACCESSORIES
CONNECTOR TYPE-Y 34



Index 19.4393.0004.34/
19.4393.0005.34

Name S-LINE SLIM ACCESSORIES
CONNECTOR TYPE-I 34/ S-LINE
SLIM ACCESSORIES
CONNECTOR TYPE-I 34 NO DC



Index 19.4393.0003.34

Name S-LINE SLIM ACCESSORIES
CONNECTOR TYPE-I 34 WITH
CABLE



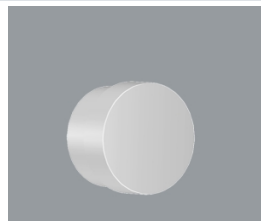
Index 19.4393.0020.34

Name S-LINE SLIM ACCESSORIES
WALL MOUNTED FIXED 34



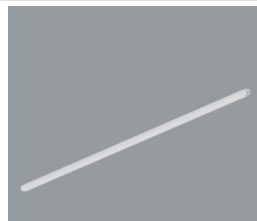
Index 19.4393.0019.34

Name S-LINE SLIM ACCESSORIES END
CAP 34



Index 19.4393.0002.34

Name S-LINE SLIM ACCESSORIES
BLIND SEGMENT 34 / L-1259MM



Luminous flux tolerance +/- 10%. Power tolerance +/- 10%.
Technical data may be changed. Photos of the luminaires may differ from reality.
Date of last update: 30-06-2025