

**Product:** S-LINE SLIM 6x500 SPOT 36° E-48V DC 04 927 / L-1259MM

**Index:** 19.4393.6471.04



## Description

S-LINE SLIM is an innovative lighting solution designed with an ultra-sleek aluminum profile (Ø30mm), making it as versatile as it is stylish. This system not only supports standalone lighting fixtures but also enables the creation of intricate, large-scale systems with different shapes by combining different types of lights and numerous accessories, allowing for endless configurations. With S-LINE SLIM, designers have complete flexibility to bring creative visions to life, with a very quick installation, using a tool-free, reliable "jack" system for quick assembly. Each lighting module rotates a full 360 degrees on its axis, offering the option for both direct illumination and indirect lighting, by reflecting light. The S-LINE SLIM SYSTEM includes three distinct types of light modules to suit any design need: opal diffuser for soft, even lighting, UGR<19 Louver with 30° or 45° optics for glare control and adjustable spotlights for accent lighting with beam angles of 15°, 24°, and 36°. Luminaire is available in two lengths (859mm - 18W and 1259mm - 24W) and three colour temperatures (2700K, 3000K, and 4000K) with a CRI>90, S-LINE SLIM delivers exceptional colour accuracy and lighting quality. The system's accessories open up countless installation possibilities: suspended or surface-mounted, in L, T, or X shapes, adapting effortlessly to various architectural needs, also thanks to the 180° adjustable corner connector allowing the creation of creative and irregular shapes.

## Product information

|          |   |
|----------|---|
| Category | Surface mounted luminaires                            |
| Family   | S-LINE SLIM   |
| Name     | S-LINE SLIM 6x500 SPOT 36° E-48V DC 04 927 / L-1259MM |
| Index    | 19.4393.6471.04                                       |

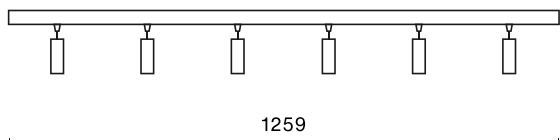


## Light and electrical data

|   |  |
|---|--|
| Light source                              | LED                                    |
| Luminous flux LED [lm]                    | 2442                                   |
| LED power [W]                             | 24                                     |
| Luminaire luminous flux [lm]              | 1839,3                                 |
| Power of luminaire [W]                    | 26                                     |
| Luminaire's light efficiency [lm/W]       | 70,7                                   |
| Color of the light [K]                    | 2700                                   |
| CRI                                       | >90                                    |
| SDCM (LED sources)                        | 3                                      |
| Beam angle [°]                            | (C0-C180) / (C90-C270) - 38,4° / 35,2° |
| Photobiological risk class (IEC/EN 62471) | RG0                                    |
| Protection against electric shock         | III                                    |
| Protection degree                         | IP20                                   |
| Voltage                                   | 48 V DC                                |
| Lifetime of LED sources [h]               | 36000                                  |
| Lx/By                                     | L80/B10                                |
| Operating temperature range [°C]          | 5 ÷ 35                                 |
| Driver                                    | standard on/off (E)                    |

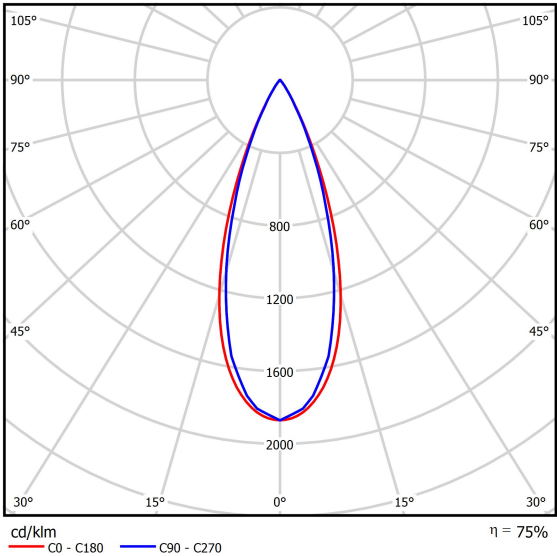
## Mechanical data

○  
33  
H



|                  |  |
|------------------|--|
| Assembly         | surface mounted on slings or mounted on wall |
| Material         | aluminum                                     |
| Color            | RAL 9005 (black)                             |
| Diffuser         | optical system based on PMMA lenses          |
| Impact resistant | IK04   |
| Dimensions [mm]  | Ø33 x 1259                                   |

A graph of light



Accessories

Index 19.4393.0012.04/  
19.4393.0013.04

Name S-LINE SLIM ACCESSORIES  
WALL MOUNTED CONNECTOR  
TYPE-I 04 NO DC/ S-LINE SLIM  
ACCESSORIES WALL MOUNTED  
CONNECTOR TYPE-I 04



Index 19.4393.0014.04

Name S-LINE SLIM ACCESSORIES  
WALL MOUNTED CONNECTOR  
TYPE-I 04 WITH CABLE



Index 19.4393.0015.04/  
19.4393.0016.04

Name S-LINE SLIM ACCESSORIES  
WALL MOUNTED CONNECTOR  
TYPE-L 04/ S-LINE SLIM  
ACCESSORIES WALL MOUNTED  
CONNECTOR TYPE-L 04 WITH  
CABLE



Index 19.4393.0017.04

Name S-LINE SLIM ACCESSORIES  
WALL MOUNTED CONNECTOR  
TYPE-T 04



Index 19.4393.0018.04

Name S-LINE SLIM ACCESSORIES  
WALL MOUNTED CONNECTOR  
TYPE-X 04



Index 19.4393.0006.04

Name S-LINE SLIM ACCESSORIES  
CONNECTOR TYPE-L 04 WITH  
CABLE



Index 19.4393.0007.04/  
19.4393.0008.04

Name S-LINE SLIM ACCESSORIES  
CONNECTOR TYPE-L 04/ S-LINE  
SLIM ACCESSORIES  
CONNECTOR TYPE-L 04 NO DC



Index 19.4393.0009.04

Name S-LINE SLIM ACCESSORIES  
CONNECTOR TYPE-T 04



Index 19.4393.0010.04

Name S-LINE SLIM ACCESSORIES  
CONNECTOR TYPE-X 04



Index 19.4393.0011.04

Name S-LINE SLIM ACCESSORIES  
CONNECTOR TYPE-Y 04



Index 19.4393.0004.04/  
19.4393.0005.04

Name S-LINE SLIM ACCESSORIES  
CONNECTOR TYPE-I 04/ S-LINE  
SLIM ACCESSORIES  
CONNECTOR TYPE-I 04 NO DC



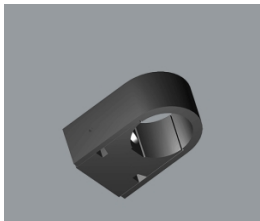
Index 19.4393.0003.04

Name S-LINE SLIM ACCESSORIES  
CONNECTOR TYPE-I 04 WITH  
CABLE



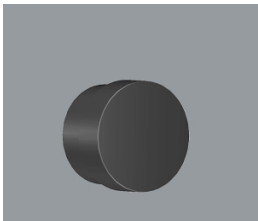
Index 19.4393.0020.04

Name S-LINE SLIM ACCESSORIES  
WALL MOUNTED FIXED 04



Index 19.4393.0019.04

Name S-LINE SLIM ACCESSORIES END  
CAP 04



Index 19.4393.0002.04

Name S-LINE SLIM ACCESSORIES  
BLIND SEGMENT 04 / L-1259MM



Luminous flux tolerance +/- 10%. Power tolerance +/- 10%.  
Technical data may be changed. Photos of the luminaires may differ from reality.  
Date of last update: 30-06-2025