

**Product:** S-LINE SLIM 4x500 SPOT 24° E-48V DC 34 927 / L-859MM

**Index:** 19.4393.5371.34



## Description

S-LINE SLIM is an innovative lighting solution designed with an ultra-sleek aluminum profile (Ø30mm), making it as versatile as it is stylish. This system not only supports standalone lighting fixtures but also enables the creation of intricate, large-scale systems with different shapes by combining different types of lights and numerous accessories, allowing for endless configurations. With S-LINE SLIM, designers have complete flexibility to bring creative visions to life, with a very quick installation, using a tool-free, reliable "jack" system for quick assembly. Each lighting module rotates a full 360 degrees on its axis, offering the option for both direct illumination and indirect lighting, by reflecting light. The S-LINE SLIM SYSTEM includes three distinct types of light modules to suit any design need: opal diffuser for soft, even lighting, UGR<19 Louver with 30° or 45° optics for glare control and adjustable spotlights for accent lighting with beam angles of 15°, 24°, and 36°. Luminaire is available in two lengths (859mm - 18W and 1259mm - 24W) and three colour temperatures (2700K, 3000K, and 4000K) with a CRI>90, S-LINE SLIM delivers exceptional colour accuracy and lighting quality. The system's accessories open up countless installation possibilities: suspended or surface-mounted, in L, T, or X shapes, adapting effortlessly to various architectural needs, also thanks to the 180° adjustable corner connector allowing the creation of creative and irregular shapes.

## Product information

Category	Surface mounted luminaires
Family	S-LINE SLIM
Name	S-LINE SLIM 4x500 SPOT 24° E-48V DC 34 927 / L-859MM
Index	19.4393.5371.34
EAN	5902107635541

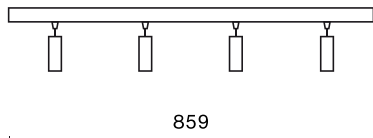


## Light and electrical data

Light source	LED
Luminous flux LED [lm]	1628
LED power [W]	16
Luminaire luminous flux [lm]	1265,3
Power of luminaire [W]	18
Luminaire's light efficiency [lm/W]	70,3
Color of the light [K]	2700
CRI	>90
SDCM (LED sources)	3
Beam angle [°]	(C0-C180) / (C90-C270) - 23,6° / 24,2°
Photobiological risk class (IEC/EN 62471)	RG0
Protection against electric shock	III
Protection degree	IP20
Voltage	48 V DC
Lifetime of LED sources [h]	36000
Lx/By	L80/B10
Operating temperature range [°C]	5 ÷ 35
Driver	standard on/off (E)

**Mechanical data**

○  
33  
┌



Assembly	surface mounted on slings or mounted on wall
Material	aluminum
Color	RAL 9016 (white)
Diffuser	optical system based on PMMA lenses
Impact resistant	IK04
Dimensions [mm]	Ø33 x 859

**A graph of light**



## Accessories

Index 19.4393.0012.34/  
19.4393.0013.34

Name S-LINE SLIM ACCESSORIES  
WALL MOUNTED CONNECTOR  
TYPE-I 34 NO DC/ S-LINE SLIM  
ACCESSORIES WALL MOUNTED  
CONNECTOR TYPE-I 34



Index 19.4393.0014.34

Name S-LINE SLIM ACCESSORIES  
WALL MOUNTED CONNECTOR  
TYPE-I 34 WITH CABLE



Index 19.4393.0015.34/  
19.4393.0016.34

Name S-LINE SLIM ACCESSORIES  
WALL MOUNTED CONNECTOR  
TYPE-L 34/ S-LINE SLIM  
ACCESSORIES WALL MOUNTED  
CONNECTOR TYPE-L 34 WITH  
CABLE



Index 19.4393.0017.34

Name S-LINE SLIM ACCESSORIES  
WALL MOUNTED CONNECTOR  
TYPE-T 34



Index 19.4393.0018.34

Name S-LINE SLIM ACCESSORIES  
WALL MOUNTED CONNECTOR  
TYPE-X 34



Index 19.4393.0006.34

Name S-LINE SLIM ACCESSORIES  
CONNECTOR TYPE-L 34 WITH  
CABLE



Index 19.4393.0007.34/  
19.4393.0008.34

Name S-LINE SLIM ACCESSORIES  
CONNECTOR TYPE-L 34/ S-LINE  
SLIM ACCESSORIES  
CONNECTOR TYPE-L 34 NO DC



Index 19.4393.0009.34

Name S-LINE SLIM ACCESSORIES  
CONNECTOR TYPE-T 34



Index 19.4393.0010.34

Name S-LINE SLIM ACCESSORIES  
CONNECTOR TYPE-X 34



Index 19.4393.0011.34

Name S-LINE SLIM ACCESSORIES  
CONNECTOR TYPE-Y 34



Index 19.4393.0004.34/  
19.4393.0005.34

Name S-LINE SLIM ACCESSORIES  
CONNECTOR TYPE-I 34/ S-LINE  
SLIM ACCESSORIES  
CONNECTOR TYPE-I 34 NO DC



Index 19.4393.0003.34

Name S-LINE SLIM ACCESSORIES  
CONNECTOR TYPE-I 34 WITH  
CABLE



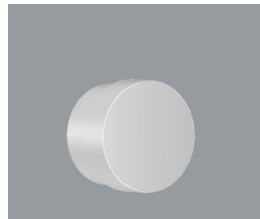
Index 19.4393.0020.34

Name S-LINE SLIM ACCESSORIES  
WALL MOUNTED FIXED 34



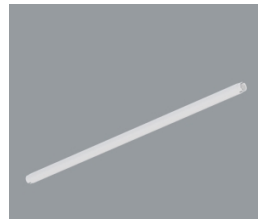
Index 19.4393.0019.34

Name S-LINE SLIM ACCESSORIES END  
CAP 34



Index 19.4393.0001.34

Name S-LINE SLIM ACCESSORIES  
BLIND SEGMENT 34 / L-859MM



Luminous flux tolerance +/- 10%. Power tolerance +/- 10%.  
Technical data may be changed. Photos of the luminaires may differ from reality.  
Date of last update: 17-04-2026