

Product: GRANVIA / GRANVIA PRO TRUNKING RAIL 34 9X WIRES / L-1500MM**Index:** 19.4377.0011.34

Description

The trunking rail, that is a part of the GRANVIA linear lighting system is designed for surface-mounted or suspended installation. The rail is available in three lengths for greater flexibility: 1.5m, 3m and 4.5m. The connection between the two rails is made without tools, which, together with the long dimensions, minimises installation time for installers. It is a top-quality steel profile (Arcelor Mittal), which guarantees its protection in industrial and commercial spaces. The rail is available in 4 wiring options (5, 7, 9 and 11 wires), which allow the connection of three phases to system components equipped with a traditional on/off driver, and the possibility of connecting components equipped with a DALI driver, emergency system, sensors, etc.

Product information

Category	Industrial luminaires
Family	GRANVIA & GRANVIA PRO TRUNKING RAIL
Name	GRANVIA / GRANVIA PRO TRUNKING RAIL 34 9X WIRES / L-1500MM
Index	19.4377.0011.34
EAN	5902107603830



Light and electrical data

Voltage	220..240 V, 50..60 Hz
---------	-----------------------

Mechanical data



B



A

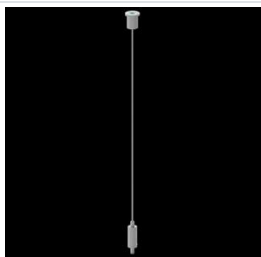
Assembly	directly mounted to ceiling construction or surface mounted on slings using accessories
Material	steel sheet
Color	RAL 9016 (white)
Dimensions [mm]	1500 x 64 x 45



Accessories

Index 19.3272.1205.00

Name SUSPENSION NEW TYPE-E
LENGHT-1,5 METER WITHOUT
WIRE 1-POINT



Index 19.3272.1801.00

Name SUSPENSION NEW TYPE-W
LENGHT-1,0 METRA WITHOUT
WIRE 1-POINT



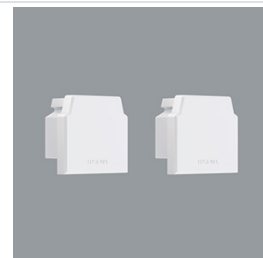
Index 19.4377.0013.00

Name GRANVIA / GRANVIA PRO
TRUNKING RAIL CONNECTOR



Index 19.4377.0014.34

Name GRANVIA / GRANVIA PRO IP20
SET OF 2 BLIND END CAPS 34



Index 19.4377.0015.34

Name GRANVIA / GRANVIA PRO IP20
SET OF BLIND END CAP AND
END CAP WITH CABLE GLANDS
34



Index 19.4377.0016.00

Name GRANVIA / GRANVIA PRO
TRUNKING RAIL SUSPENSION
BRACKET



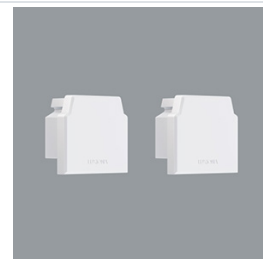
Index 19.4377.0035.34 /
19.4377.0036.34 /
19.4377.0037.34
/19.4377.0017.34

Name GRANVIA / GRANVIA PRO BLIND
SECTION COVER 34 / L-300MM /
L-600MM / L-900MM / L-1500MM



Index 19.4377.0018.34

Name GRANVIA / GRANVIA PRO IP54
SET OF 2 BLIND END CAPS 34



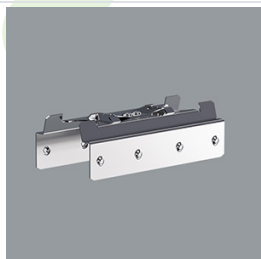
Index 19.4377.0019.34

Name GRANVIA / GRANVIA PRO IP54
SET OF BLIND END CAP AND
END CAP WITH CABLE GLANDS
34



Index 19.4377.0020.00

Name GRANVIA IP54 / GRANVIA IP54
PRO TRUNKING RAIL
CONNECTOR



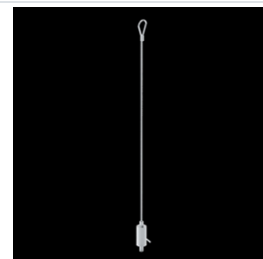
Index 19.4377.0021.34

Name GRANVIA IP54 / GRANVIA IP54
PRO BLIND SECTION COVER 34
/ L-1500MM



Index 6E1-9875-3-1,5

Name SUSPENSION NEW TYPE-C
LENGHT-1,5 METER WITHOUT
WIRE 1-POINT



Index 19.4377.0028.00

Name GRANVIA / GRANVIA PRO SET
OF POWER/END CONNECTOR
9X WIRES

