

Produkt: GRANVIA / GRANVIA PRO TRUNKING RAIL 34 11X WIRES / L-3000MM

Index: 19.4377.0008.34



Beschreibung

Produkt für den Innenbereich. Montageart: Anbau an der Decke oder an Aufhängebügeln mit Zubehör. Gehäuse aus Stahlblech. Farbe - RAL 9016 (weiß). Abmessungen: 3000 x 64 x 45 mm.

Produktmerkmale

Kategorie	Industrieleuchten
Familie	GRANVIA & GRANVIA PRO TRUNKING RAIL
Type	GRANVIA / GRANVIA PRO TRUNKING RAIL 34 11X WIRES / L-3000MM
Index	19.4377.0008.34



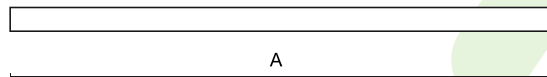
Technische Daten

Netzspannung	220..240 V, 50..60 Hz
--------------	-----------------------

Technische Daten

I]

B

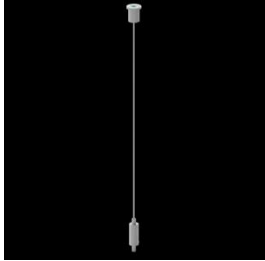


Montageart	Anbau an der Decke oder an Aufhängebügeln mit Zubehör
Leuchtenkörper	Stahlblech
Leuchtenfarbe	RAL 9016 (weiß)
Abmessungen [mm]	3000 x 64 x 45

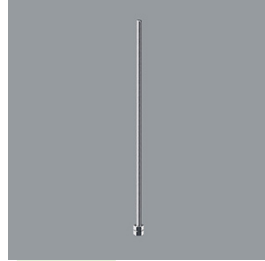


Zubehör

Index 19.3272.1205.00

Type SUSPENSION NEW TYPE-E
LENGHT-1,5 METER WITHOUT
WIRE 1-POINT

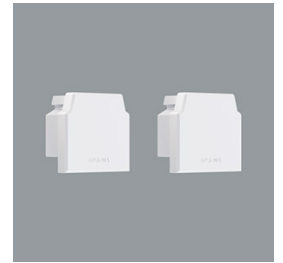
Index 19.3272.1801.00

Type SUSPENSION NEW TYPE-W
LENGHT-1,0 METRA WITHOUT
WIRE 1-POINT

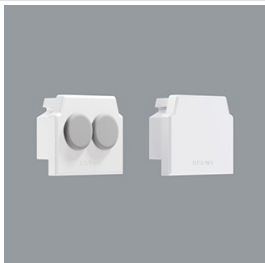
Index 19.4377.0013.00

Type GRANVIA / GRANVIA PRO
TRUNKING RAIL CONNECTOR

Index 19.4377.0014.34

Type GRANVIA / GRANVIA PRO IP20
SET OF 2 BLIND END CAPS 34

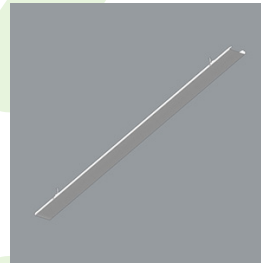
Index 19.4377.0015.34

Type GRANVIA / GRANVIA PRO IP20
SET OF BLIND END CAP AND
END CAP WITH CABLE GLANDS
34

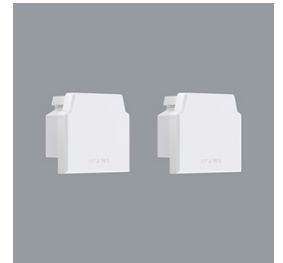
Index 19.4377.0016.00

Type GRANVIA / GRANVIA PRO
TRUNKING RAIL SUSPENSION
BRACKET

Index 19.4377.0017.34

Type GRANVIA / GRANVIA PRO BLIND
SECTION COVER 34 / L-1500MM

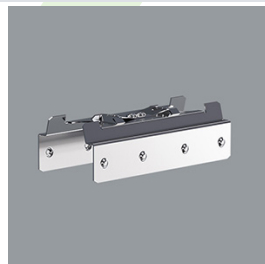
Index 19.4377.0018.34

Type GRANVIA / GRANVIA PRO IP54
SET OF 2 BLIND END CAPS 34

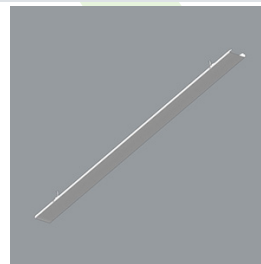
Index 19.4377.0019.34

Type GRANVIA / GRANVIA PRO IP54
SET OF BLIND END CAP AND
END CAP WITH CABLE GLANDS
34

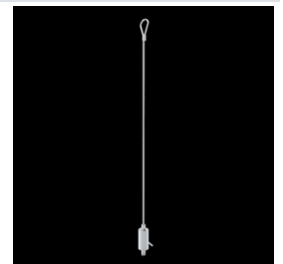
Index 19.4377.0020.00

Type GRANVIA IP54 / GRANVIA IP54
PRO TRUNKING RAIL
CONNECTOR

Index 19.4377.0021.34

Type GRANVIA IP54 / GRANVIA IP54
PRO BLIND SECTION COVER 34 /
L-1500MM

Index 6E1-9875-3-1,5

Type SUSPENSION NEW TYPE-C
LENGHT-1,5 METER WITHOUT
WIRE 1-POINT

Index 19.4377.0029.00

Type GRANVIA / GRANVIA PRO SET
OF POWER/END CONNECTOR
11X WIRES