

Product: AGALINE LED 3R 14400 OPTICS-2 EDD 34 IP65 840 / L-1250MM

Index: 19.4200.2223.34



Description

Agaline 3R is a single linear luminaire designed for mounting on slings. The body is made of white powder-coated steel sheet. Optical system based on lenses providing different light distribution. High level of protection against penetration of dust and water - IP65. Agaline is an excellent solution for lighting industrial facilities and warehouses, but also finds application in offices, supermarkets and shops.

Product information

Category	Industrial luminaires
Family	AGALINE LED 3R
Name	AGALINE LED 3R 14400 OPTICS-2 EDD 34 IP65 840 / L-1250MM
Index	19.4200.2223.34

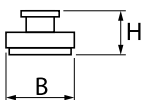
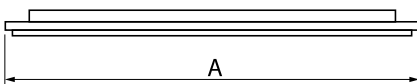


Light and electrical data

Light source	LED
Luminous flux LED [lm]	16008
LED power [W]	86,4
Luminaire luminous flux [lm]	15207,6
Power of luminaire [W]	96,8
Luminaire's light efficiency [lm/W]	157,1
Color of the light [K]	4000
CRI	>80
SDCM (LED sources)	3
Beam angle [°]	(C0-C180) / (C90-C270) - 43,6° / 83,2°
Photobiological risk class (IEC/EN 62471)	RG0
Protection against electric shock	I
Protection degree	IP65
Voltage	220..240 V, 50..60 Hz
Lifetime of LED sources [h]	90000
Lx/By	L80B10
Operating temperature range [°C]	-25 ÷ 35
Driver	DIM DALI (EDD)

Mechanical data

Assembly	surface mounted on slings
Material	steel sheet
Color	RAL 9016 (white)
Diffuser	OPTICS (optical system based on lenses)
Impact resistant	IK04
Dimensions [mm]	1250 x 95 x 68

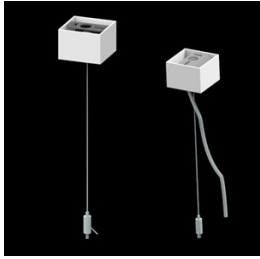




Accessories

Index 6E1-500KW34K-5

Name SUSPENSION NEW TYPE-A+B 34
LENGHT 1,5M WIRE 5X SET



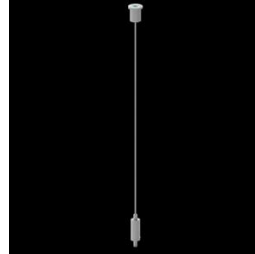
Index 6E1-8670-B-1,5-5X

Name SUSPENSION NEW TYPE-F
LENGHT-1,5 METER WIRE 5X 1-
POINT



Index 19.3272.1205.00

Name SUSPENSION NEW TYPE-E
LENGHT-1,5 METER WITHOUT
WIRE 1-POINT



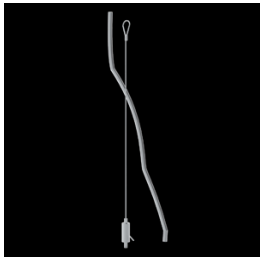
Index 6E1-500KWB34K-5

Name SUSPENSION NEW TYPE-A+E 34
LENGHT 1,5M WIRE 5X SET



Index 6E1-9875-4-1,5-5X

Name SUSPENSION NEW TYPE-D
LENGHT-1,5 METER WIRE 5X 1-
POINT



Index 6E1-9875-3-1,5

Name SUSPENSION NEW TYPE-C
LENGHT-1,5 METER WITHOUT
WIRE 1-POINT

