

**Product:** AGALINE LED 3R 21600 OPTICS-2 EDD 34 IP65 830 / L-1860MM

**Index:** 19.4200.4213.34



## Description

Agaline 3R is a single linear luminaire designed for mounting on slings. The body is made of white powder-coated steel sheet. Optical system based on lenses providing different light distribution. High level of protection against penetration of dust and water - IP65. Agaline is an excellent solution for lighting industrial facilities and warehouses, but also finds application in offices, supermarkets and shops.

## Product information

Category	Industrial luminaires
Family	AGALINE LED 3R
Name	AGALINE LED 3R 21600 OPTICS-2 EDD 34 IP65 830 / L-1860MM
Index	19.4200.4213.34

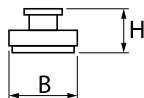
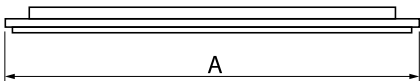


## Light and electrical data

Light source	LED
Luminous flux LED [lm]	22884
LED power [W]	129,6
Luminaire luminous flux [lm]	21739,8
Power of luminaire [W]	145,2
Luminaire's light efficiency [lm/W]	149,7
Color of the light [K]	3000
CRI	>80
SDCM (LED sources)	3
Beam angle [°]	(C0-C180) / (C90-C270) - 43,6° / 83,2°
Photobiological risk class (IEC/EN 62471)	RG0
Protection against electric shock	I
Protection degree	IP65
Voltage	220..240 V, 50..60 Hz
Lifetime of LED sources [h]	90000
Lx/By	L80B10
Operating temperature range [°C]	-25 ÷ 35
Driver	DIM DALI (EDD)

## Mechanical data

Assembly	surface mounted on slings
Material	steel sheet
Color	RAL 9016 (white)
Diffuser	OPTICS (optical system based on lenses)
Impact resistant	IK04
Dimensions [mm]	1860 x 95 x 68





Accessories

Index 6E1-500KW34K-5  
Name SUSPENSION NEW TYPE-A+B 34  
LENGHT 1,5M WIRE 5X SET



Index 6E1-8670-B-1,5-5X  
Name SUSPENSION NEW TYPE-F  
LENGHT-1,5 METER WIRE 5X 1-  
POINT



Index 19.3272.1205.00  
Name SUSPENSION NEW TYPE-E  
LENGHT-1,5 METER WITHOUT  
WIRE 1-POINT



Index 6E1-500KWB34K-5  
Name SUSPENSION NEW TYPE-A+E 34  
LENGHT 1,5M WIRE 5X SET



Index 6E1-9875-4-1,5-5X  
Name SUSPENSION NEW TYPE-D  
LENGHT-1,5 METER WIRE 5X 1-  
POINT



Index 6E1-9875-3-1,5  
Name SUSPENSION NEW TYPE-C  
LENGHT-1,5 METER WITHOUT  
WIRE 1-POINT

