

**Product:** ANGLE 3700 20° EDD 21 840

**Index:** 19.4130.2123.21



## Description

Adjustable round downlight designed for ceiling recessed installation. Luminaire body built in die-cast aluminium finished in grey or white. Product built-in an high bright specular reflector without irisation made of high purity aluminium with an angle beam of 20°, 40° or 60°. It is resistant to solids, dust, and liquids penetration – IP20/44. Luminaire sets a ball joint system which allows rotation 355° and tilting 70°. Product is optimised to be used as general and accent lighting for commercial areas shop-windows and different indoor spaces.

## Product information

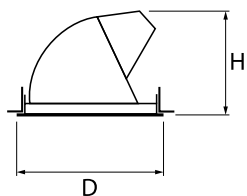
Category	<b>Recessed luminaires</b>
Family	<b>ANGLE</b>
Name	<b>ANGLE 3700 20° EDD 21 840</b>
Index	<b>19.4130.2123.21</b>



## Light and electrical data

Light source	<b>LED</b>
Luminous flux LED [lm]	<b>4110,8</b>
LED power [W]	<b>23,2</b>
Luminaire luminous flux [lm]	<b>3431</b>
Power of luminaire [W]	<b>26,4</b>
Luminaire's light efficiency [lm/W]	<b>130</b>
Color of the light [K]	<b>4000</b>
CRI	<b>&gt;80</b>
SDCM (LED sources)	<b>3</b>
Beam angle [°]	<b>(C0-C180) / (C90-C270) - 22,4° / 22,4°</b>
Photobiological risk class (IEC/EN 62471)	<b>RG0</b>
Protection against electric shock	<b>II</b>
Protection degree	<b>IP20/44</b>
Voltage	<b>220..240 V, 50..60 Hz</b>
Lifetime of LED sources [h]	<b>89000 (1) / 100000 (2)</b>
Lx/By	<b>L90/B10 (1) / L80/B10 (2)</b>
Operating temperature range [°C]	<b>5 ÷ 35</b>
Driver	<b>DIM DALI (EDD)</b>
Power factor cos φ	<b>&gt;0,95</b>
Circuit load capacity	<b>50 (B10), 80 (B16), 61 (C10), 98 (C16)</b>

**Mechanical data**



Assembly	mounted in suspended ceiling
Material	aluminum
Color	RAL 9006 (grey)
Diffuser	hardened transparent glass
Impact resistant	IK04
Dimensions [mm]	Ø151 x 125
Mounting hole [mm]	Ø143

**A graph of light**

