

**Product:** ANGLE 3700 20° E 21 830

**Index:** 19.4130.2111.21



## Description

Adjustable round downlight designed for ceiling recessed installation. Luminaire body built in die-cast aluminium finished in grey or white. Product built-in an high bright specular reflector without irisation made of high purity aluminium with an angle beam of 20°, 40° or 60°. It is resistant to solids, dust, and liquids penetration – IP20/44. Luminaire sets a ball joint system which allows rotation 355° and tilting 70°. Product is optimised to be used as general and accent lighting for commercial areas shop-windows and different indoor spaces.

## Product information

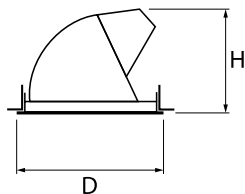
Category	Recessed luminaires
Family	ANGLE
Name	ANGLE 3700 20° E 21 830
Index	19.4130.2111.21



## Light and electrical data

Light source	LED
Luminous flux LED [lm]	3995,3
LED power [W]	23,2
Luminaire luminous flux [lm]	3334,6
Power of luminaire [W]	26,4
Luminaire's light efficiency [lm/W]	126,3
Color of the light [K]	3000
CRI	>80
SDCM (LED sources)	3
Beam angle [°]	(C0-C180) / (C90-C270) - 22,4° / 22,4°
Photobiological risk class (IEC/EN 62471)	RG0
Protection against electric shock	II
Protection degree	IP20/44
Voltage	220..240 V, 50..60 Hz
Lifetime of LED sources [h]	89000 (1) / 100000 (2)
Lx/By	L90/B10 (1) / L80/B10 (2)
Operating temperature range [°C]	5 ÷ 35
Driver	standard on/off (E)
Power factor cos φ	>0,95
Circuit load capacity	39 (B10), 62 (B16), 65 (C10), 104 (C16)

**Mechanical data**



Assembly	mounted in suspended ceiling
Material	aluminum
Color	RAL 9006 (grey)
Diffuser	hardened transparent glass
Impact resistant	IK04
Dimensions [mm]	Ø151 x 125
Mounting hole [mm]	Ø143

**A graph of light**

