

Product: ANGLE 2500 40° E 21 830**Index:** 19.4130.1211.21

Description

Adjustable round downlight designed for ceiling recessed installation. Luminaire body built in die-cast aluminium finished in grey or white. Product built-in an high bright especular reflector without irisation made of high purity aluminium with an angle beam of 20°, 40° or 60°. It is resistant to solids, dust, and liquids penetration – IP20/44. Luminaire sets a ball joint system which allows rotation 355° and tilting 70°. Product is optimised to be used as general and accent lighting for commercial areas shop-windows and different indoor spaces.

Product information

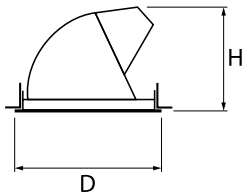
| | |
|----------|-------------------------|
| Category | Recessed luminaires |
| Family | ANGLE |
| Name | ANGLE 2500 40° E 21 830 |
| Index | 19.4130.1211.21 |



Light and electrical data

| | |
|---|--|
| Light source | LED |
| Luminous flux LED [lm] | 3018,8 |
| LED power [W] | 16,2 |
| Luminaire luminous flux [lm] | 2531,3 |
| Power of luminaire [W] | 18,4 |
| Luminaire's light efficiency [lm/W] | 137,6 |
| Color of the light [K] | 3000 |
| CRI | >80 |
| SDCM (LED sources) | 3 |
| Beam angle [°] | (C0-C180) / (C90-C270) - 33,4° / 33,4° |
| Photobiological risk class (IEC/EN 62471) | RG0 |
| Protection against electric shock | II |
| Protection degree | IP20/44 |
| Voltage | 220..240 V, 50..60 Hz |
| Lifetime of LED sources [h] | 89000 (1) / 100000 (2) |
| Lx/By | L90/B10 (1) / L80/B10 (2) |
| Operating temperature range [°C] | 5 ÷ 35 |
| Driver | standard on/off (E) |
| Power factor cos φ | >0,95 |
| Circuit load capacity | 29 (B10), 47 (B16), 49 (C10), 79 (C16) |

Mechanical data



| | |
|--------------------|------------------------------|
| Assembly | mounted in suspended ceiling |
| Material | aluminum |
| Color | RAL 9006 (grey) |
| Diffuser | hardened transparent glass |
| Impact resistant | IK04 |
| Dimensions [mm] | Ø151 x 125 |
| Mounting hole [mm] | Ø143 |

A graph of light

