

**Product:** ANGLE 2500 20° E 33 840

**Index:** 19.4130.1121.33



## Description

Adjustable round downlight designed for ceiling recessed installation. Luminaire body built in die-cast aluminium finished in grey or white. Product built-in an high bright specular reflector without irisation made of high purity aluminium with an angle beam of 20°, 40° or 60°. It is resistant to solids, dust, and liquids penetration – IP20/44. Luminaire sets a ball joint system which allows rotation 355° and tilting 70°. Product is optimised to be used as general and accent lighting for commercial areas shop-windows and different indoor spaces.

## Product information

Category	Recessed luminaires
Family	ANGLE
Name	ANGLE 2500 20° E 33 840
Index	19.4130.1121.33

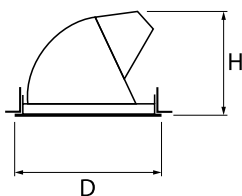


## Light and electrical data

Light source	LED
Luminous flux LED [lm]	2521
LED power [W]	18
Luminaire luminous flux [lm]	2104
Power of luminaire [W]	21
Luminaire's light efficiency [lm/W]	100,2
Color of the light [K]	4000
CRI	82
SDCM (LED sources)	3
Beam angle [°]	(C0-C180) / (C90-C270) - 22,4° / 22,4°
Protection against electric shock	II
Protection degree	IP20/44
Voltage	220..240 V, 50..60 Hz
Lifetime of LED sources [h]	50000
Lx/By	L80/B10
Operating temperature range [°C]	5 ÷ 30
Driver	standard on/off (E)
Power factor cos φ	>0,95
Circuit load capacity	29 (B10), 47 (B16), 49 (C10), 79 (C16)

## Mechanical data

Assembly	mounted in suspended ceiling
Material	aluminum
Color	RAL 9010 (white)
Diffuser	hardened transparent glass
Impact resistant	IK04
Dimensions [mm]	Ø151 x 125
Mounting hole [mm]	Ø143



## A graph of light

