

**Product:** ANGLE 2500 20° EDD 21 830

**Index:** 19.4130.1113.21



## Description

Adjustable round downlight designed for ceiling recessed installation. Luminaire body built in die-cast aluminium finished in grey or white. Product built-in an high bright specular reflector without irisation made of high purity aluminium with an angle beam of 20°, 40° or 60°. It is resistant to solids, dust, and liquids penetration – IP20/44. Luminaire sets a ball joint system which allows rotation 355° and tilting 70°. Product is optimised to be used as general and accent lighting for commercial areas shop-windows and different indoor spaces.

## Product information

Category	<b>Recessed luminaires</b>
Family	<b>ANGLE</b>
Name	<b>ANGLE 2500 20° EDD 21 830</b>
Index	<b>19.4130.1113.21</b>

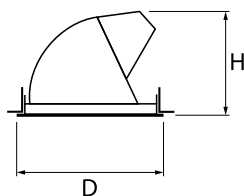


## Light and electrical data

Light source	<b>LED</b>
Luminous flux LED [lm]	<b>3019</b>
LED power [W]	<b>16,2</b>
Luminaire luminous flux [lm]	<b>2520</b>
Power of luminaire [W]	<b>18,4</b>
Luminaire's light efficiency [lm/W]	<b>137</b>
Color of the light [K]	<b>3000</b>
CRI	<b>82</b>
SDCM (LED sources)	<b>3</b>
Beam angle [°]	<b>(C0-C180) / (C90-C270) - 22,4° / 22,4°</b>
Protection against electric shock	<b>II</b>
Protection degree	<b>IP20/44</b>
Voltage	<b>220..240 V, 50..60 Hz</b>
Lifetime of LED sources [h]	<b>91000 (1) / 100000 (2) / 100000 (3)</b>
Lx/By	<b>L90/B10 (1) / L80/B10 (2) / L70/B10 (3)</b>
Operating temperature range [°C]	<b>5 ÷ 30</b>
Driver	<b>DIM DALI (EDD)</b>
Power factor cos φ	<b>&gt;0,95</b>
Circuit load capacity	<b>50 (B10), 80 (B16), 61 (C10), 98 (C16)</b>

## Mechanical data

Assembly	<b>mounted in suspended ceiling</b>
Material	<b>aluminum</b>
Color	<b>RAL 9006 (grey)</b>
Diffuser	<b>hardened transparent glass</b>
Impact resistant	<b>IK04</b>
Dimensions [mm]	<b>Ø151 x 125</b>
Mounting hole [mm]	<b>Ø143</b>



## A graph of light

