

**Product:** BERYL SURFACE LED COMPACT 1800 MICRO-PRM E 34 840

**Index:** 19.4129.2521.34



## Description

Small downlight ceiling luminaire. Several variants of the diffusers and different light distributions available. Simple assembly. Perfect for lighting corridors, reception, cloakrooms.

## Product information

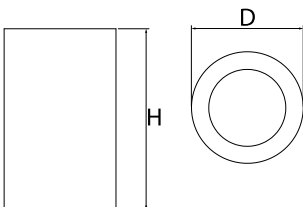
Category	<b>Compact</b>
Family	<b>BERYL SURFACE LED COMPACT</b>
Name	<b>BERYL SURFACE LED COMPACT 1800 MICRO-PRM E 34 840</b>
Index	<b>19.4129.2521.34</b>



## Light and electrical data

Light source	<b>LED</b>
Luminous flux LED [lm]	<b>2058</b>
LED power [W]	<b>11</b>
Luminaire luminous flux [lm]	<b>1561</b>
Power of luminaire [W]	<b>13</b>
Luminaire's light efficiency [lm/W]	<b>122</b>
Color of the light [K]	<b>4000</b>
CRI	<b>85</b>
SDCM (LED sources)	<b>3</b>
Beam angle [°]	<b>(C0-C180) / (C90-C270) - 53,6° / 57°</b>
Protection against electric shock	<b>I</b>
Protection degree	<b>IP20</b>
Voltage	<b>220..240 V, 50..60 Hz</b>
Lifetime of LED sources [h]	<b>83000 (1) / 100000 (2) / 100000 (3)</b>
Lx/By	<b>L90/B10 (1) / L80/B10 (2) / L70/B10 (3)</b>
Operating temperature range [°C]	<b>5 ÷ 30</b>
Driver	<b>standard on/off (E)</b>
Power factor cos φ	<b>&gt;0,95</b>
Circuit load capacity	<b>61 (B10), 98 (B16), 102 (C10), 164 (C16)</b>

## Mechanical data



Assembly	<b>surface mounted on ceiling</b>
Material	<b>aluminum</b>
Color	<b>RAL 9016 (white)</b>
Diffuser	<b>Micro-PRM (micro-prismatic diffuser PMMA)</b>
Impact resistant	<b>IK04</b>
Weight [kg]	<b>0,78</b>
Dimensions [mm]	<b>Ø108 x 175</b>

## A graph of light

