

**Product:** BERYL SURFACE LED COMPACT 1800 24° SH E 34 840

**Index:** 19.4129.2221.34



## Description

Small downlight ceiling luminaire. Several variants of the diffusers and different light distributions available. Simple assembly. Perfect for lighting corridors, reception, cloakrooms.

## Product information

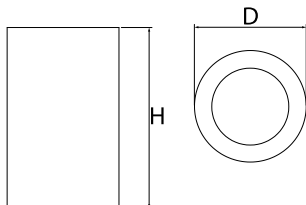
Category	Compact
Family	BERYL SURFACE LED COMPACT
Name	BERYL SURFACE LED COMPACT 1800 24° SH E 34 840
Index	19.4129.2221.34
EAN	5902107255176



## Light and electrical data

Light source	LED
Luminous flux LED [lm]	2058
LED power [W]	11,3
Luminaire luminous flux [lm]	1432
Power of luminaire [W]	12,8
Luminaire's light efficiency [lm/W]	111,9
Color of the light [K]	4000
CRI	85
SDCM (LED sources)	3
Beam angle [°]	(C0-C180) / (C90-C270) - 25,2° / 23,4°
Protection against electric shock	I
Protection degree	IP20
Voltage	220..240 V, 50..60 Hz
Lifetime of LED sources [h]	83000 (1) / 100000 (2) / 100000 (3)
Lx/By	L90/B10 (1) / L80/B10 (2) / L70/B10 (3)
Operating temperature range [°C]	5 ÷ 30
Driver	standard on/off (E)
Power factor cos φ	>0,95
Circuit load capacity	61 (B10), 98 (B16), 102 (C10), 164 (C16)

## Mechanical data



Assembly	surface mounted on ceiling
Material	aluminum
Color	RAL 9016 (white)
Diffuser	SH (transparent hardened glass)
Impact resistant	IK04
Dimensions [mm]	Ø108 x 175

A graph of light

